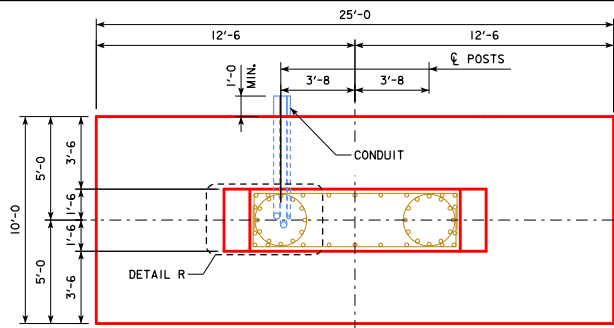


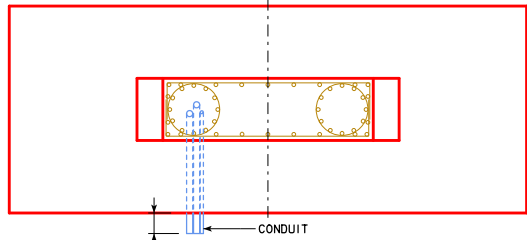
*REVISED 07-2017, MODIFIED NOTES.
 *REVISED 03-2019, ADDED H TOTAL FOUNDATION HEIGHT DIMENSION TO SIDE ELEVATION TO IMPROVE CLARITY. UPDATED BRIDGE ENGINEER SIGNATURE.
 *STEEL OVERHEAD SIGN TRUSS.DGN - SOST-18-11 - THIS SHEET ISSUED 03-2013.



FOUNDATION PLAN FOR LEFT TRUSS SUPPORT

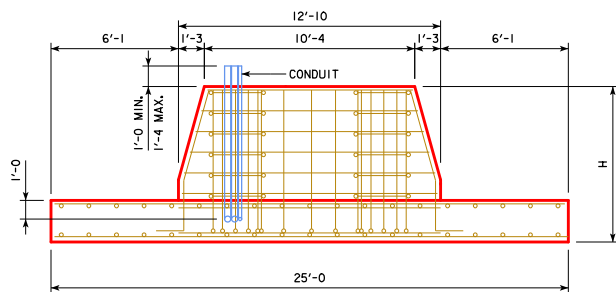
LOCATED AT MEDIAN FOR TYPICAL DESIGNS
 ANCHOR BOLT ASSEMBLIES AND SELECTED REINFORCING BARS NOT SHOWN

TRAFFIC FLOW



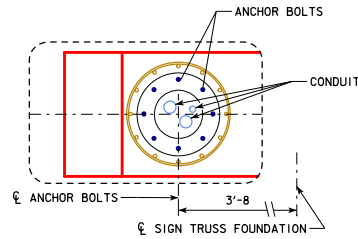
FOUNDATION PLAN FOR RIGHT TRUSS SUPPORT

LOCATED AT OUTSIDE SHOULDER FOR TYPICAL DESIGNS
 ANCHOR BOLT ASSEMBLIES AND SELECTED REINFORCING BARS NOT SHOWN



SIDE ELEVATION

ANCHOR BOLT ASSEMBLIES NOT SHOWN



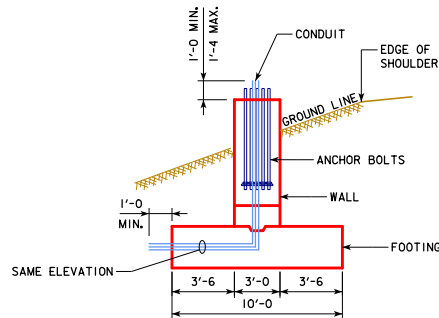
DETAIL R

LOCATION OF CONDUIT WITHIN ANCHOR BOLT CIRCLE

STEM WALL PERIMETER REINFORCING BARS NOT SHOWN

THIS SHEET FOR DMS TRUSSES ONLY

ELECTRICAL CONDUIT IS REQUIRED IN FOUNDATIONS SUPPORTING TRUSSES WITH DYNAMIC MESSAGE SIGNS.

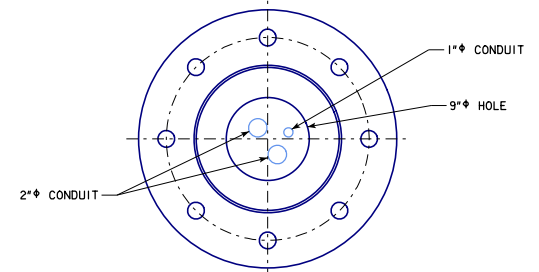


END ELEVATION

REINFORCING BARS NOT SHOWN

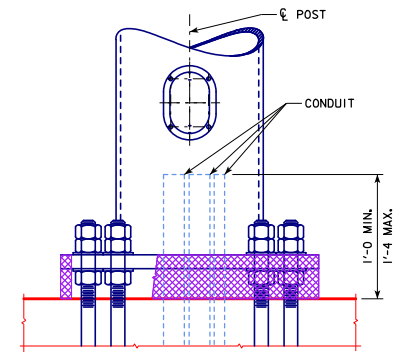
GENERAL NOTES:

FOR FOUNDATIONS SUPPORTING TRUSSES WITH DYNAMIC MESSAGE SIGNS, PLACE ONE 1" CONDUIT AND TWO 2" CONDUITS WITHIN THE ANCHOR BOLT CIRCLE CLOSEST TO THE DIRECTION OF THE APPROACHING TRAFFIC. EXTEND CONDUIT ENDS A MINIMUM OF 1'-0" ABOVE FOUNDATION WALL AND 1'-0" PAST EDGE OF FOUNDATION FOOTING ON SIDE AWAY FROM ROADWAY. CONDUIT SHALL BE PLACED IN BOTH FOUNDATIONS UNLESS OTHERWISE INDICATED ON DETAIL PROJECT PLANS. ALL CONDUIT SHALL BE SCHEDULE 40 PLASTIC.



BASE PLATE PLAN

CONDUIT IS PRESENT ONLY IN POSTS WITH HAND HOLES



BASE SIDE VIEW

OPPOSITE OF TRAFFIC SIDE
 NOT ALL ANCHOR BOLTS SHOWN

SEE THE FOLLOWING STANDARD SHEETS FOR ELECTRICAL ACCESS DETAILS IN SUPPORT POSTS FOR DMS TRUSS DESIGNS:
 STANDARD SHEET SOST-06-11 FOR 14" POSTS (50'-100' TRUSS SPANS)
 STANDARD SHEET SOST-07-11 FOR 16" POSTS (105'-130' TRUSS SPANS)

03-2019 LATEST REVISION DATE APPROVED BY BRIDGE ENGINEER	 STANDARD DESIGN	
	STEEL OVERHEAD SIGN TRUSS SEPTEMBER, 2011	
	CONDUIT LOCATION DETAILS 50'-130' SPANS	SOST-18-11