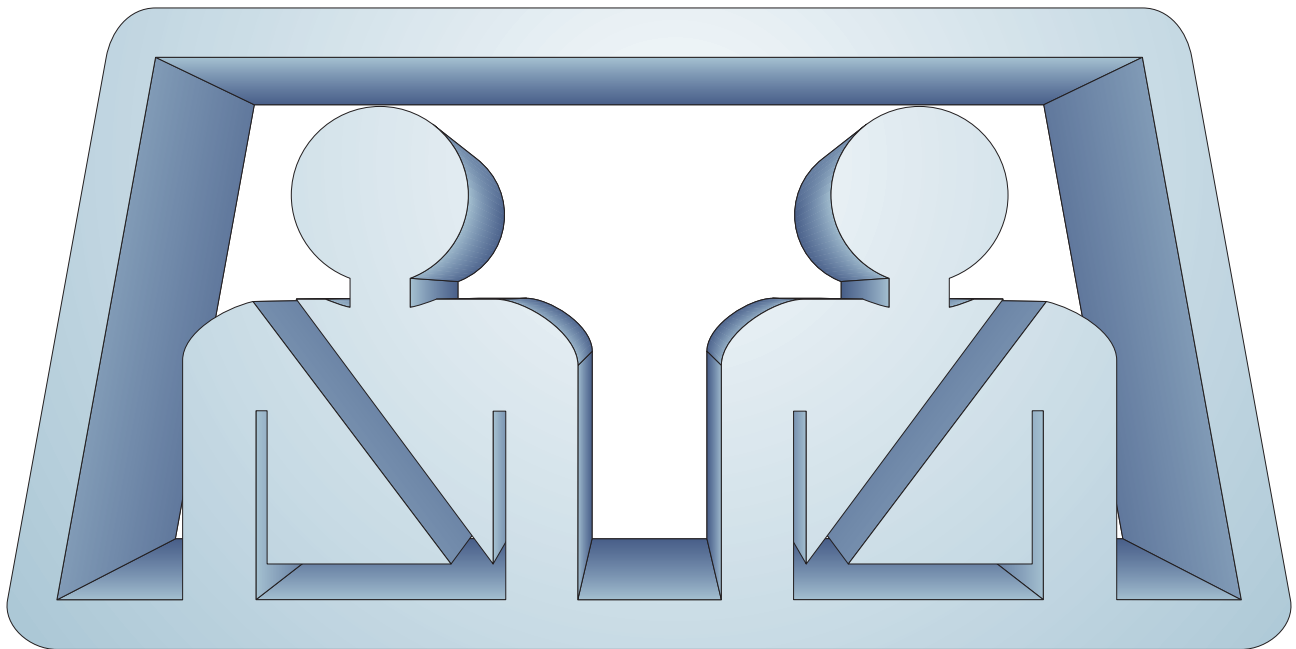


2008

Seat Belt

Usage Survey



**Site surveys conducted by officers of the
Iowa State Patrol, Department of Public Safety**

**Statistics compiled and survey written by the
Office of Driver Services, Iowa Department of Transportation**

2008 Seat Belt Usage Survey

List of Charts

1. Seat Belt Usage Survey—Summary	2
2. Restraint Usage by Year and Road System	2
3. Usage Percent by Year—All Road Systems.....	3
4. Usage Percent by Year—Municipal Road System.....	3
5. Usage Percent by Year—Primary Road System	4
6. Usage Percent by Year—Secondary Road System	4
7. Usage Percent by Year—Interstate System.....	5
8. April Survey by Road System	6
9. July Survey by Road System	6
10. April/July Change.....	6
11. Usage by Road Systems and Population	7
12. Usage by Population and Road System	7
13. Usage by Area of State and Road System	7
14. Usage by Day of Week and Road System	8
15. Usage by Time of Day and Road System.....	8
16. Site Selection by County	9
17. Site Selection by Area of State	10
18. Site Selection by Population Category	10
19. Statewide Vehicle Miles of Travel	10
20. April Seat Belt Survey Sites	11
21. July Seat Belt Survey Sites.....	12

2008 Seat Belt Usage Survey

Chart 1

2008 Seat Belt Usage Survey--Summary

Road System	April Usage			July Usage			Change
	Observed	Used	Percentage	Observed	Used	Percentage	
Statewide Total	12,155	10,942	90.67%	12,612	11,665	92.92%	2.25%
Municipal	5,081	4,534	89.23%	5,019	4,583	91.31%	2.08%
Primary	4,695	4,215	89.78%	4,830	4,505	93.27%	3.49%
Secondary	917	847	92.37%	915	866	94.64%	2.28%
Interstate	1,462	1,346	92.07%	1,848	1,711	92.59%	0.52%

Estimated statewide total April survey usage weighted by vehicles miles of travel and 95% confidence intervals for the estimated variance are +/- 0.19%

Estimated statewide total July survey usage weighted by vehicles miles of travel and 95% confidence intervals for the estimated variance are +/- 0.14%

Chart 2

Restraint Usage by Year and Road System

Survey	Statewide	Municipal	Primary	Secondary	Interstate
06/86	27%	20%	27%	24%	43%
09/86	46%	34%	48%	42%	62%
04/87	63%	54%	65%	64%	69%
09/87	56%	48%	56%	55%	67%
09/88	55%	46%	55%	52%	69%
09/89	59%	49%	56%	61%	72%
09/90	61%	49%	60%	61%	76%
09/91	68%	64%	64%	64%	79%
09/92	71%	62%	69%	71%	83%
09/93	73%	59%	73%	71%	80%
09/94	73%	63%	72%	72%	82%
09/95	75%	65%	75%	76%	85%
09/96	75%	69%	74%	71%	85%
11/97	75%	69%	74%	71%	85%
10/98	77%	70%	76%	79%	84%
10/99	78%	72%	78%	80%	84%
10/00	78%	73%	79%	77%	82%
10/01	81%	76%	83%	83%	81%
09/02	82%	79%	83%	87%	81%
03/03	82%	78%	86%	81%	82%
07/03	86%	82%	88%	83%	90%
04/04	84%	79%	84%	88%	84%
07/04	86%	84%	87%	86%	88%
04/05	85%	78%	87%	89%	85%
07/05	86%	81%	86%	87%	88%
04/06	89%	87%	89%	90%	90%
07/06	89%	84%	89%	90%	92%
07/07	92%	91%	92%	92%	94%

2008 Seat Belt Usage Survey

Chart 3
Seat Belt Usage Percent by Year—All Road Systems

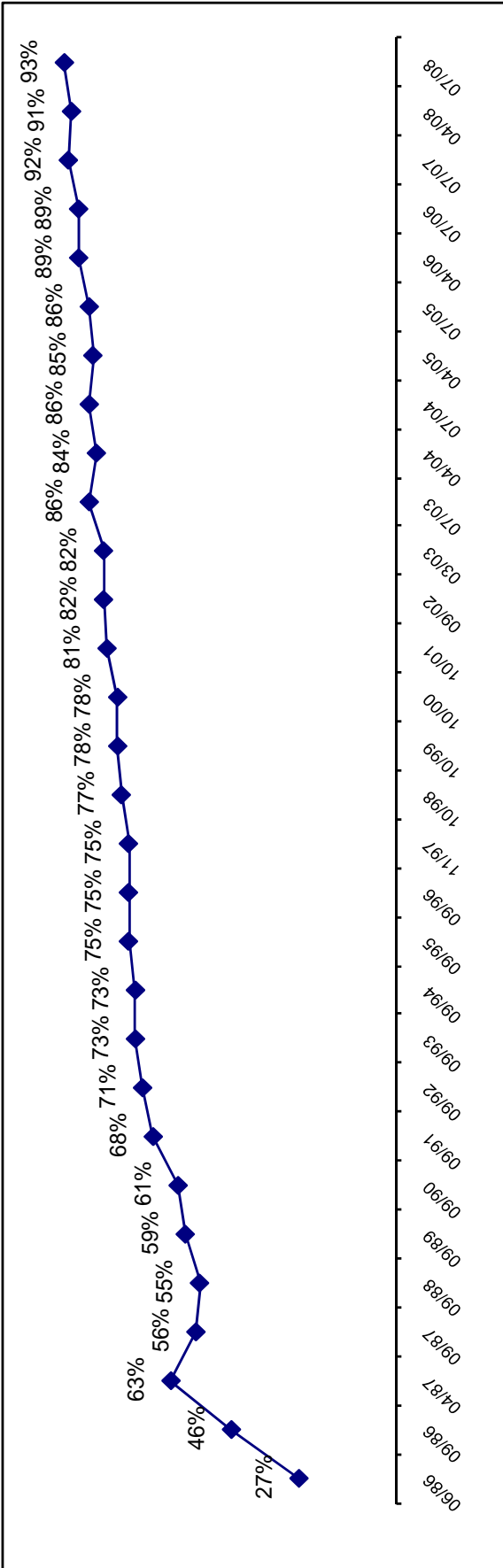
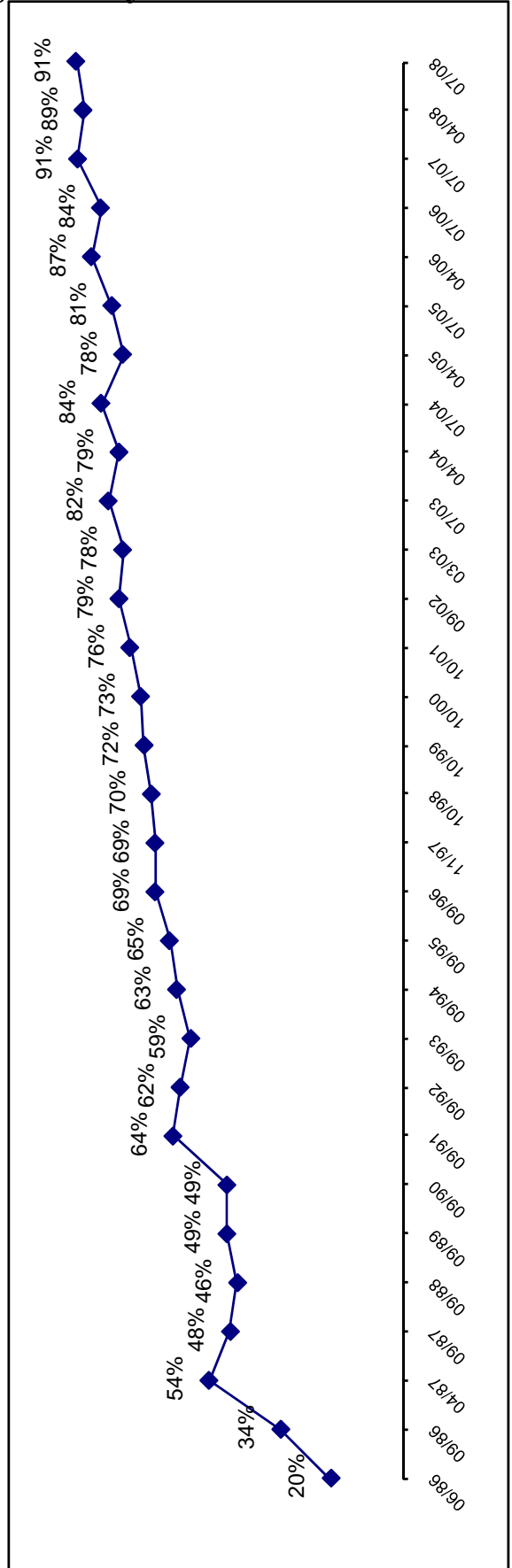


Chart 4
Seat Belt Usage Percent by Year—Municipal Road System



2008 Seat Belt Usage Survey

Chart 5
Seat Belt Usage Percent by Year—Primary Road System

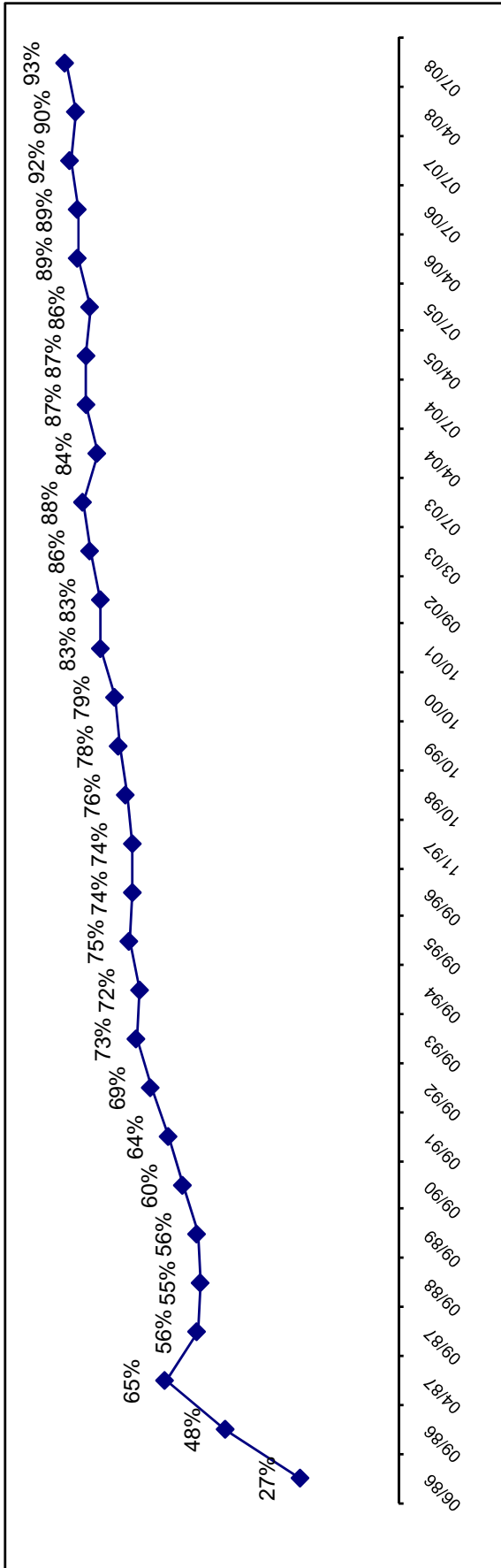
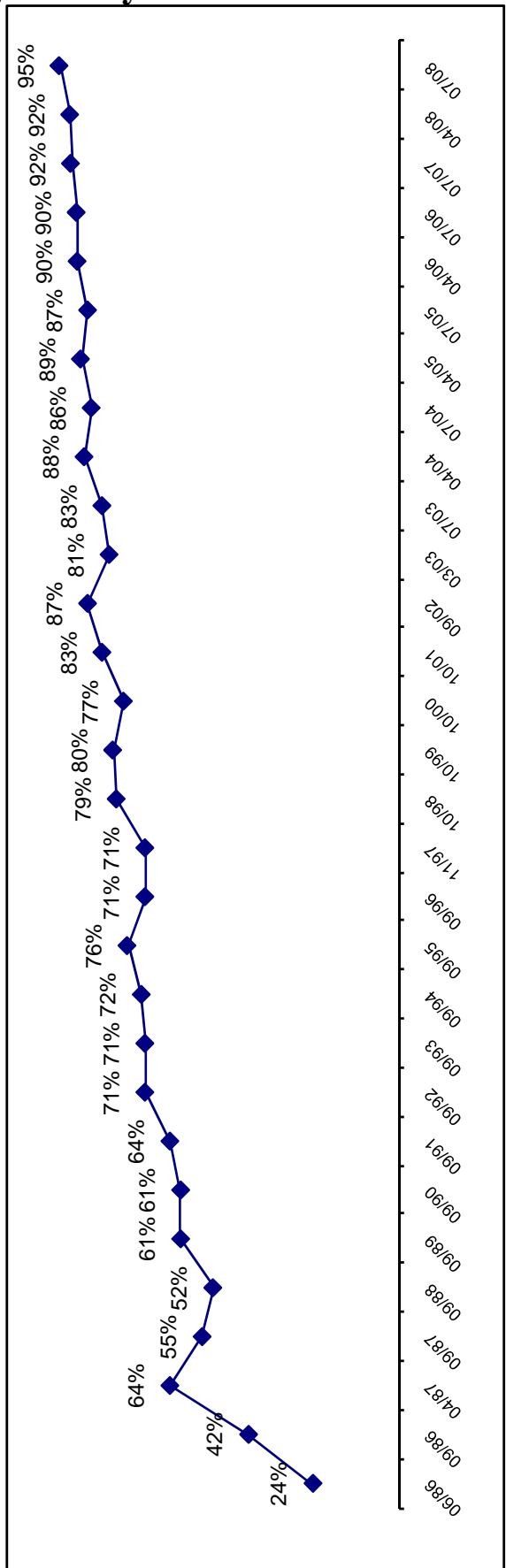
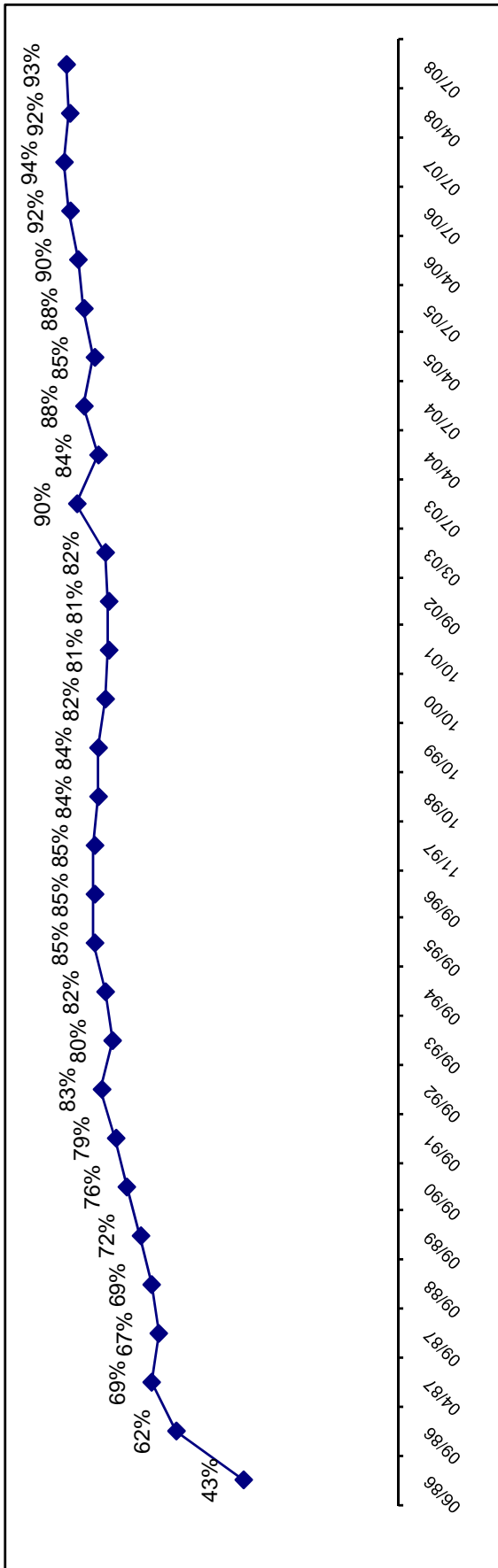


Chart 6
Seat Belt Usage Percent by Year—Secondary Road System



2008 Seat Belt Usage Survey

Chart 7
Seat Belt Usage Percent by Year—Interstate Highway System



2008 Seat Belt Usage Survey

Chart 8
April Survey by Road System

Road System	Drivers						
	Belt		None		Unknown		Total
	#	%	#	%	#	%	#
Municipal	3,603	87.5%	397	9.6%	117	2.8%	4,117
Primary	3,341	87.9%	358	9.4%	104	2.7%	3,803
Secondary	654	90.3%	53	7.3%	17	2.3%	724
Interstate	1,041	90.4%	79	6.9%	32	2.8%	1,152
Total	8,639	88.2%	887	9.1%	270	2.8%	9,796
	Passengers						
Municipal	931	82.6%	150	13.3%	46	4.1%	1,127
Primary	874	84.8%	122	11.8%	35	3.4%	1,031
Secondary	193	90.2%	17	7.9%	4	1.9%	214
Interstate	305	86.9%	37	10.5%	9	2.6%	351
Total	2,303	84.6%	326	12.0%	94	3.5%	2,723
	Total						
Municipal	4,534	86.5%	547	10.4%	163	3.1%	5,244
Primary	4,215	87.2%	480	9.9%	139	2.9%	4,834
Secondary	847	90.3%	70	7.5%	21	2.2%	938
Interstate	1,346	89.6%	116	7.7%	41	2.7%	1,503
Total	10,942	87.4%	1,213	9.7%	364	2.9%	12,519

Chart 9
July Survey by Road System

Road System	Drivers						
	Belt		None		Unknown		Total
	#	%	#	%	#	%	#
Municipal	3,642	89.8%	313	7.7%	102	2.5%	4,057
Primary	3,477	91.0%	256	6.7%	87	2.3%	3,820
Secondary	668	92.5%	40	5.5%	14	1.9%	722
Interstate	1,294	89.6%	99	6.9%	52	3.6%	1,445
Total	9,081	90.4%	708	7.0%	255	2.5%	10,044
	Passengers						
Municipal	941	86.6%	123	11.3%	23	2.1%	1,087
Primary	1,028	91.7%	69	6.2%	24	2.1%	1,121
Secondary	198	94.7%	9	4.3%	2	1.0%	209
Interstate	417	87.6%	38	8.0%	21	4.4%	476
Total	2,584	89.3%	239	8.3%	70	2.4%	2,893
	Total						
Municipal	4,583	89.1%	436	8.5%	125	2.4%	5,144
Primary	4,505	91.2%	325	6.6%	111	2.2%	4,941
Secondary	866	93.0%	49	5.3%	16	1.7%	931
Interstate	1,711	89.1%	137	7.1%	73	3.8%	1,921
Total	11,665	90.2%	947	7.3%	325	2.5%	12,937

Chart 10
April/July Change

Road System	Drivers						
	Belt		None		Unknown		Total
	#	%	#	%	#	%	#
Municipal	39	2.3%	-84	-1.9%	-15	-0.3%	-60
Primary	136	3.2%	-102	-2.7%	-17	-0.5%	17
Secondary	14	2.2%	-13	-1.8%	-3	-0.4%	-2
Interstate	253	-0.8%	20	0.0%	20	0.8%	293
Total	442	2.2%	-179	-2.0%	-15	-0.2%	248
	Passengers						
Municipal	10	4.0%	-27	-2.0%	-23	-2.0%	-40
Primary	154	6.9%	-53	-5.7%	-11	-1.3%	90
Secondary	5	4.5%	-8	-3.6%	-2	-0.9%	-5
Interstate	112	0.7%	1	-2.6%	12	1.8%	125
Total	281	4.7%	-87	-3.7%	-24	-1.0%	170
	Total						
Municipal	49	2.6%	-111	-2.0%	-38	-0.7%	-100
Primary	290	4.0%	-155	-3.4%	-28	-0.6%	107
Secondary	19	2.7%	-21	-2.2%	-5	-0.5%	-7
Interstate	365	-0.5%	21	-0.6%	32	1.1%	418
Total	723	2.8%	-266	-2.4%	-39	-0.4%	418

2008 Seat Belt Usage Survey

Chart 11

Seat Belt Usage by Road System and Population

Population and Road System	Usage			
	April		July	
A Over 200,000	1,287	89.13%	1,939	92.20%
Municipal	395	89.98%	844	91.44%
Primary	562	90.65%	500	93.46%
Secondary	29	87.88%	25	92.59%
Interstate	301	85.51%	570	92.23%
B 150,000 TO 199,999	2,875	94.88%	2,998	95.57%
Municipal	1,291	94.65%	1,187	94.43%
Primary	831	94.22%	957	95.60%
Secondary	320	95.24%	283	96.59%
Interstate	433	96.65%	571	97.44%
C 75,000 TO 149,999	1,688	88.15%	1,431	89.89%
Municipal	647	89.12%	487	90.52%
Primary	575	85.44%	489	88.91%
Secondary	75	84.27%	90	94.74%
Interstate	391	91.57%	365	89.24%
D 25,000 TO 74,999	2,033	86.77%	1,820	91.60%
Municipal	958	82.44%	580	87.22%
Primary	782	90.72%	1,009	95.46%
Secondary	197	90.78%	147	90.18%
Interstate	96	94.12%	84	82.35%
E Under 25,000	3,059	89.37%	3,477	91.67%
Municipal	1,243	89.42%	1,485	90.77%
Primary	1,465	88.36%	1,550	91.88%
Secondary	226	93.39%	321	95.25%
Interstate	125	93.98%	121	90.98%
Total	10,942	90.02%	11,665	92.49%
Municipal	4,534	89.23%	4,583	91.31%
Primary	4,215	89.78%	4,505	93.27%
Secondary	847	92.37%	866	94.64%
Interstate	1,346	92.07%	1,711	92.59%

Chart 12

Seat Belt Usage by Population and Road System

Population and Road System	Usage			
	April		July	
Municipal	4,438	126.44%	4,556	135.88%
Over 200,000	477	89.16%	724	90.16%
150,000 to 199,999	1,291	94.65%	1,187	94.43%
75,000 to 149,999	647	89.12%	487	90.52%
25,000 to 74,999	780	88.14%	673	89.14%
Under 25,000	1,243	89.42%	1,485	90.77%
Primary	4,055	89.79%	4,417	93.44%
Over 200,000	360	90.91%	371	95.87%
150,000 to 199,999	831	94.22%	957	95.60%
75,000 to 149,999	575	85.44%	489	88.91%
25,000 to 74,999	824	90.85%	1,050	95.28%
Under 25,000	1,465	88.36%	1,550	91.88%
Secondary	1,103	86.37%	981	93.61%
Over 200,000	327	74.66%	181	88.29%
150,000 to 199,999	320	95.24%	283	96.59%
75,000 to 149,999	75	84.27%	90	94.74%
25,000 to 74,999	155	90.12%	106	89.83%
Under 25,000	226	93.39%	321	95.25%
Interstate	1,346	92.07%	1,711	92.59%
Over 200,000	301	85.51%	570	92.23%
150,000 to 199,999	433	96.65%	571	97.44%
75,000 to 149,999	391	91.57%	365	89.24%
25,000 to 74,999	96	94.12%	84	82.35%
Under 25,000	125	93.98%	121	90.98%
Total	10,942	90.02%	11,665	92.49%
Over 200,000	1,465	85.12%	1,846	91.70%
150,000 to 199,999	2,875	94.88%	2,998	95.57%
75,000 to 149,999	1,688	88.15%	1,431	89.89%
25,000 to 74,999	1,855	89.79%	1,913	92.10%
Under 25,000	3,059	89.37%	3,477	91.67%

Chart 13

Seat Usage by Area of State and Road System

Area of State and Road System	Usage			
	April		July	
Northeast	2,546	91.81%	2,614	93.56%
Municipal	112	92.56%	136	97.84%
Primary	1,215	91.77%	1,285	93.66%
Secondary	316	91.07%	278	88.25%
Interstate	903	92.05%	915	94.52%
Northwest	2,897	90.00%	2,913	91.17%
Municipal	281	90.65%	272	93.79%
Primary	512	87.52%	356	89.67%
Secondary	450	85.88%	615	84.25%
Interstate	1,654	91.89%	1,670	93.93%
Southeast	2,129	92.01%	2,757	94.71%
Municipal	689	91.02%	1,039	95.94%
Primary	631	94.89%	864	95.47%
Secondary	809	90.70%	854	92.52%
Interstate	0	0.00%	0	0.00%
Southwest	3,370	87.56%	3,381	91.08%
Municipal	1,014	92.18%	1,103	92.69%
Primary	2,044	85.31%	1,838	90.01%
Secondary	250	87.41%	388	92.38%
Interstate	62	92.54%	52	86.67%
Total	10,942	90.02%	11,665	92.49%
Municipal	2,096	91.61%	2,550	94.37%
Primary	4,402	88.57%	4,343	92.09%
Secondary	1,825	89.07%	2,135	89.41%
Interstate	2,619	91.96%	2,637	93.98%

2008 Seat Belt Usage Survey

Chart 14

Seat Belt Usage by Day of Week and Road System

Day of Week and Road System	Usage	
	April	July
Sunday	1,866 89.07%	1,853 90.13%
Municipal	249 89.25%	227 90.08%
Primary	1,429 88.76%	1,315 89.88%
Secondary	157 90.75%	268 91.47%
Interstate	31 93.94%	43 89.58%
Monday	1,447 89.05%	1,423 92.04%
Municipal	522 93.38%	532 94.33%
Primary	215 89.96%	307 93.03%
Secondary	506 85.47%	392 87.31%
Interstate	204 86.81%	192 94.58%
Tuesday	1,996 93.66%	2,257 93.50%
Municipal	495 94.11%	617 95.51%
Primary	342 93.44%	304 95.00%
Secondary	350 89.97%	602 89.05%
Interstate	809 95.18%	734 95.08%
Wednesday	2,574 88.33%	2,864 92.78%
Municipal	346 87.59%	633 93.50%
Primary	1,231 85.19%	1,084 91.40%
Secondary	534 92.71%	537 92.43%
Interstate	463 92.97%	610 94.87%
Thursday	514 92.45%	591 94.26%
Municipal	0 0.00%	0 0.00%
Primary	301 90.94%	312 94.55%
Secondary	0 0.00%	0 0.00%
Interstate	213 94.67%	279 93.94%
Friday	890 91.10%	929 94.99%
Municipal	392 91.16%	427 96.39%
Primary	209 91.67%	259 94.53%
Secondary	20 #####	6 #####
Interstate	269 89.97%	237 92.94%
Saturday	1,655 89.12%	1,748 91.81%
Municipal	92 92.93%	114 95.00%
Primary	675 89.88%	762 93.73%
Secondary	258 86.29%	330 86.16%
Interstate	630 88.98%	542 92.18%
Total	10,942 90.02%	11,665 92.49%
Municipal	2,096 91.61%	2,550 94.37%
Primary	4,402 88.57%	4,343 92.09%
Secondary	1,825 89.07%	2,135 89.41%
Interstate	2,619 91.96%	2,637 93.98%

Chart 15

Seat Belt Usage by Time of Day and Road System

Time of Day and Road System	Usage	
	April	July
7 a.m. to 7:59 a.m.	1,030 88.79%	1,280 92.55%
Municipal	146 86.39%	251 89.96%
Primary	700 89.86%	865 94.23%
Secondary	8 100.00%	6 60.00%
Interstate	176 86.27%	158 89.77%
8 a.m. to 8:59 a.m.	453 83.73%	474 87.13%
Municipal	100 94.34%	94 89.52%
Primary	127 72.99%	184 82.51%
Secondary	104 89.66%	100 95.24%
Interstate	122 84.14%	96 86.49%
9 a.m. to 9:59 a.m.	1,230 91.86%	1,135 92.05%
Municipal	574 93.33%	655 92.91%
Primary	201 94.81%	131 96.32%
Secondary	59 95.16%	56 88.89%
Interstate	396 88.00%	293 89.06%
10 a.m. to 10:59 a.m.	1,353 91.11%	1,292 94.31%
Municipal	554 94.70%	428 94.69%
Primary	799 88.78%	864 94.12%
Secondary	0 0.00%	0 0.00%
Interstate	0 0.00%	0 0.00%
11 a.m. to 11:59 a.m.	587 92.30%	745 91.30%
Municipal	0 0.00%	0 0.00%
Primary	212 93.81%	347 96.12%
Secondary	147 91.88%	199 81.56%
Interstate	228 91.20%	199 94.31%
12 p.m. to 12:59 p.m.	691 82.95%	1,078 95.06%
Municipal	165 92.18%	307 98.40%
Primary	220 91.67%	604 95.72%
Secondary	8 88.89%	11 84.62%
Interstate	298 73.58%	156 87.64%
1 p.m. to 1:59 p.m.	536 86.04%	623 87.62%
Municipal	61 70.11%	25 58.14%
Primary	248 90.51%	395 88.96%
Secondary	0 0.00%	0 0.00%
Interstate	227 86.64%	203 90.63%
2 p.m. to 2:59 p.m.	1,211 90.98%	1,295 93.37%
Municipal	142 94.67%	152 93.83%
Primary	500 90.42%	478 91.92%
Secondary	312 92.04%	379 95.23%
Interstate	257 88.93%	286 93.16%
3 p.m. to 3:59 p.m.	366 94.09%	378 92.87%
Municipal	0 0.00%	0 0.00%
Primary	192 91.87%	168 89.36%
Secondary	63 98.44%	91 94.79%
Interstate	111 95.69%	119 96.75%
4 p.m. to 4:59 p.m.	1,474 89.88%	1,364 91.05%
Municipal	326 89.07%	206 91.56%
Primary	385 88.71%	404 90.79%
Secondary	420 91.70%	467 93.96%
Interstate	343 89.79%	287 86.71%
5 p.m. to 5:59 p.m.	490 94.23%	563 95.91%
Municipal	335 93.31%	347 94.55%
Primary	67 94.37%	95 97.94%
Secondary	88 97.78%	121 98.37%
Interstate	0 0.00%	0 0.00%
6 p.m. to 6:59 p.m.	1,521 91.74%	1,438 93.26%
Municipal	125 83.89%	110 92.44%
Primary	744 92.88%	759 94.52%
Secondary	485 90.32%	361 88.70%
Interstate	167 97.66%	208 97.65%
Total	10,942 90.02%	11,665 92.49%
Municipal	2,528 91.43%	2,575 92.99%
Primary	4,395 90.19%	5,294 93.14%
Secondary	1,694 91.92%	1,791 91.56%
Interstate	2,325 86.95%	2,005 91.01%

2008 Seat Belt Usage Survey

Chart 16

Site Selection by County

County	Population	Category	Area	Sites	County	Population	Category	Area	Sites
Adair	8,243	E	SW		Jefferson	16,181	E	SE	
Adams	4,482	E	SW		Johnson	111,006	C	SE	
Allamakee	14,675	E	NE		Jones	20,221	E	SE	
Appanoose	13,721	E	SE		Keokuk	11,400	E	SE	1
Audubon	6,830	E	SW		Kossuth	17,163	E	NW	
Benton	25,308	E	NE		Lee	38,052	D	SE	
Black Hawk	128,012	B	NE		Linn	191,701	B	NE	9
Boone	26,224	D	NW		Louisa	12,183	E	SE	3
Bremer	23,325	B	NE		Lucas	9,422	E	SE	
Buchanan	21,093	E	NE		Lyon	11,763	E	NW	
Buena Vista	20,411	E	NW	5	Madison	14,019	E	SW	
Butler	15,305	E	NE	5	Mahaska	22,335	E	SE	
Calhoun	11,115	E	NW		Marion	32,052	D	SE	
Carroll	21,421	E	NE		Marshall	39,311	D	NE	
Cass	14,684	E	SW		Mills	14,547	E	SW	
Cedar	18,187	E	SE		Mitchell	10,874	E	NE	
Cerro Gordo	46,447	D	NE		Monona	10,020	E	NW	
Cherokee	13,035	E	NW		Monroe	8,016	E	SE	
Chickasaw	13,095	E	NE		Montgomery	11,771	E	SW	
Clarke	9,133	E	SW	2	Muscatine	41,722	E	SE	
Clay	17,372	E	NW	7	O'Brien	15,102	E	NW	
Clayton	18,678	E	NE		Osceola	7,003	E	NW	
Clinton	50,149	D	SE		Page	16,976	E	SW	
Crawford	16,942	E	NW		Palo Alto	10,147	E	NW	
Dallas	40,750	A	SW	2	Plymouth	24,849	E	NW	
Davis	8,541	E	SE		Pocahontas	8,662	E	NW	
Decatur	8,689	E	SW	6	Polk	374,601	A	SW	9
Delaware	18,404	E	NE		Pottawattamie	87,704	C	SW	12
Des Moines	42,351	D	SE		Poweshiek	18,815	E	SE	
Dickinson	16,424	E	NW		Ringgold	5,469	E	SW	
Dubuque	89,143	C	NE		Sac	11,529	E	NW	
Emmet	11,027	E	NW		Scott	158,668	B	SE	8
Fayette	22,008	D	NE		Shelby	13,173	E	SW	
Floyd	16,900	E	NE		Sioux	31,589	D	NW	
Franklin	10,704	E	NE	6	Story	79,981	D	NW	12
Fremont	8,010	E	SW		Tama	18,103	E	NE	
Greene	10,366	E	NW		Taylor	6,958	E	SW	
Grundy	12,369	E	NE		Union	12,309	E	SW	
Guthrie	11,353	E	NW		Van Buren	7,809	E	SE	
Hamilton	16,438	E	NW		Wapello	36,051	D	SE	7
Hancock	12,100	E	NW		Warren	40,671	A	SW	2
Hardin	18,812	E	NE		Washington	20,670	E	SE	4
Harrison	15,666	E	SW		Wayne	6,730	E	SE	
Henry	20,336	E	SE		Webster	40,235	D	NW	
Howard	9,932	E	NE		Winnebago	11,723	E	NW	
Humboldt	10,381	E	NW		Winneshiek	21,310	E	NE	
Ida	7,837	E	NW		Woodbury	103,877	C	NW	
Iowa	15,671	E	SE		Worth	7,909	E	NE	
Jackson	20,296	E	NE		Wright	14,334	E	NW	
Jasper	37,213	D	SE		Totals	2,926,324			100

NOTE: Population data based on the 2000 Census

2008 Seat Belt Usage Survey

Chart 17

Site Selection by Area of State

Area of State	Northeast	Southeast	Northwest	Southwest	Totals
Number of Selected Sites	20	23	24	33	100
Number of Possible Counties	25	25	29	20	99
Number of Selected Counties	3	5	3	6	17
Percentage of Counties Selected	12.00%	16.00%	10.34%	30.00%	17.17%
Total Population in Area	835,135	777,502	599,002	714,685	2,926,324.00
Percentage of Total State Populatio	28.54%	26.57%	20.47%	24.42%	100.00%

Chart 18

Site Selection by Population Category

Area of State	A - Over 200,000	B - 150,000 to 200,000	C - 75,000 to 150,000	D - 25,000 to 75,000	E - Under 25,000	Total
Number of Selected Sites	13	17	12	19	39	61
Number of Possible Counties	3	4	4	13	75	24
Number of Selected Counties	3	2	1	2	9	17
Percentage of Counties Selected	3.00%	2.00%	1.00%	2.00%	9.00%	17.00%
Total Population in Area	456,022	501,706	391,730	521,663	1,055,203	2,926,324.00
Percentage of Total State Populatio	15.58%	17.14%	13.39%	17.83%	36.06%	100.00%

Chart 19

2007 Statewide Vehicle Miles of Travel

Vehicle Miles	Municipal	Rural	Total	Percentage
Statewide Total	12,804	18,675	31,479	100.00%
Municipal	6,813	NA	6,813	21.64%
Primary	3,505	8,014	11,519	36.59%
Secondary	NA	5,444	5,444	17.29%
Interstate	2,486	5,217	7,703	24.47%

NOTE: Vehicle miles of travel reported in 1,000,000 and provided by the Iowa Dept. of Transportation's Office of Transportation Data & counts only cars, pickups, vans & SUVs

2008 Seat Belt Usage Survey

Chart 20

April Seat Belt Survey Sites

No	County	Area	Day	Time	Location	City	Population	System	Observed	Belted
1	Polk	SW	THU	6 PM	Aurora @ Beaver	Des Moines	A	M	170	147
2	Story	NW	WED	8 AM	6th @ Grand	Ames	D	M	74	65
3	Story	NW	SAT	4 PM	Duff Exit @ Hwy 30	Ames	D	P	224	202
4	Story	NW	SUN	12 PM	E23 @ Hwy 69		D	S	45	42
5	Story	NW	THU	2 PM	E63 @ Hwy 65		D	S	9	8
6	Polk	SW	MON	1 PM	7th & Grand	Des Moines	A	M	405	298
7	Story	NW	SUN	10 AM	Hwy 133 @ Hwy 30		D	P	66	63
8	Dallas	SW	THU	12 PM	Hwy 141 @ Hwy 210		A	P	74	66
9	Polk	SW	MON	3 PM	Hwy 160 @ Hwy 69	Ankeny	A	P	250	228
10	Story	NW	MON	5 PM	Hwy 210 @ Hwy 65		D	P	27	24
11	Story	NW	SUN	6 PM	Hwy 210 @ Hwy 69		D	P	71	66
12	Story	NW	TUE	6 PM	Hwy 65 @ Hwy 30		D	P	74	68
13	Polk	SW	TUE	2 PM	Hwy 945 @ Hwy 931		A	P	17	17
14	Story	NW	THU	8 AM	I-35 Exit # 123		D	I	34	31
15	Polk	SW	SAT	6 PM	I-35 Exit # 92		A	I	115	102
16	Polk	SW	WED	12 PM	I-35 Rest Area		A	I	43	33
17	Story	NW	SUN	4 PM	I-35 Rest Area		D	I	68	65
18	Dallas	SW	THU	10 AM	I-80 Exit # 110		A	I	56	50
19	Polk	SW	SUN	2 PM	I-80 Exit # 143		A	I	138	116
20	Polk	SW	THU	4 PM	Indianola Ave @ SE 8th	Des Moines	A	M	91	82
21	Story	NW	SAT	2 PM	J Ave. @ 6th	Nevada	D	M	50	45
22	Story	NW	TUE	4 PM	Main @ Clark	Ames	D	M	166	135
23	Polk	SW	SUN	8 AM	Meredith @ Merle Hay	Des Moines	A	M	274	248
24	Clarke	SW	TUE	8 AM	E Washington @ Main St	Osceola	E	M	56	55
25	Decatur	SW	FRI	2 PM	J 12 @ Hwy 69	Weldon	E	P	33	31
26	Warren	SW	THU	12 PM	Hwy 28 @ Hwy 92	Martensdale	A	P	55	49
27	Clarke	SW	FRI	8 AM	Hwy 34 @ Hwy 69		E	P	348	292
28	Decatur	SW	TUE	10 AM	I-35 Exit # 12		E	I	62	59
29	Decatur	SW	FRI	4 PM	I-35 Exit # 22		E	I	32	28
30	Decatur	SW	TUE	12 PM	J 20 @ R69	Garden Grove	E	S	36	34
31	Decatur	SW	THU	8 AM	J 66 @ Hwy 69	Davis City	E	S	26	26
32	Warren	SW	THU	10 AM	R 57 @ Hwy 92		A	S	33	29
33	Decatur	SW	FRI	6 PM	West Jct. Hwy 69 @ Hwy 2	Leon	E	P	71	57
34	Pottawattamie	SW	SUN	5 PM	9th Ave. @ S 16th	Council Bluffs	C	M	276	251
35	Pottawattamie	SW	TUE	5 PM	A Ave & 25th St	Council Bluffs	C	M	450	396
36	Pottawattamie	SW	TUE	3 PM	Hwy 191 @ Hwy 83		C	P	124	105
37	Pottawattamie	SW	WED	4 PM	Hwy 6 @ Hwy 191		C	P	204	176
38	Pottawattamie	SW	WED	8 AM	Hwy 6 @ Hwy 59		C	P	94	80
39	Pottawattamie	SW	SUN	3 PM	Hwy 83 @ Hwy 59		C	P	106	92
40	Pottawattamie	SW	WED	2 PM	Hwy 92 @ Hwy 59		C	P	145	122
41	Pottawattamie	SW	WED	6 PM	I-29 Exit # 47		C	I	153	141
42	Pottawattamie	SW	WED	12 PM	I-80 Exit # 40		C	I	124	108
43	Pottawattamie	SW	TUE	1 PM	I-80 Rest Area		C	I	150	142
44	Pottawattamie	SW	WED	10 AM	L 55 @ Hwy 6		C	S	54	44
45	Pottawattamie	SW	SUN	1 PM	M 16 @ Hwy 92		C	S	35	31
46	Buena Vista	NW	FRI	10 AM	C 49 @ Hwy 71		E	S	46	38
47	Buena Vista	NW	MON	7 AM	Hwy 110 @ Hwy 7		E	P	129	115
48	Buena Vista	NW	MON	9 AM	Hwy 7 @ Hwy 71		E	P	82	73
49	Buena Vista	NW	MON	11 AM	Hwy 7 @ Hwy 71		E	P	109	97
50	Buena Vista	NW	FRI	12 PM	Lake @ Third	Storm Lake	E	M	111	100
51	Clay	NW	FRI	1 PM	4th @ Grand	Spencer	E	M	110	104
52	Clay	NW	FRI	3 PM	B 53 @ Hwy 71		E	S	20	20
53	Clay	NW	SAT	1 PM	Grand @ 18th	Spencer	E	M	365	345
54	Clay	NW	SUN	3 PM	Hwy 10 @ Hwy 71		E	P	22	22
55	Clay	NW	SAT	3 PM	Hwy 18 @ Hwy 71		E	P	114	106
56	Clay	NW	SAT	5 PM	B40 @ Hwy 71		E	P	46	45
57	Clay	NW	FRI	5 PM	N 14 @ Hwy 18		E	S	33	31
58	Franklin	NE	SUN	12 PM	1st @ 1st Ave	Hampton	E	M	100	87
59	Franklin	NE	SAT	2 PM	C 25 @ Hwy 65		E	S	8	8
60	Butler	NE	MON	5 PM	C 55 @ Hwy 14		E	S	3	1
61	Franklin	NE	MON	3 PM	S14 & Hwy 107		E	P	20	20
62	Butler	NE	SAT	6 PM	Hwy 14 @ Hwy 20		E	P	56	47
63	Butler	NE	SAT	5 PM	Hwy 14 @ Hwy 3		E	P	31	30
64	Butler	NE	SAT	4 PM	Hwy 188 @ Hwy 3		E	P	62	52
65	Franklin	NE	MON	1 PM	Hwy 65 @ Hwy 3		E	P	93	60
66	Franklin	NE	SUN	10 AM	I-35 Exit # 165		E	I	34	33
67	Franklin	NE	SUN	8 AM	I-35 Exit # 170		E	I	5	5
68	Butler	NE	SAT	3 PM	Main @ Railroad	Allison	E	M	87	61
69	Linn	NE	TUE	9 AM	8th Ave @ 2nd	Cedar Rapids	B	M	288	269
70	Linn	NE	SAT	11 AM	E 34 @ Hwy 13		B	S	116	111
71	Linn	NE	SAT	9 AM	E 70 @ Hwy 151		B	S	44	42
72	Linn	NE	TUE	11 AM	First Ave @ 29th	Cedar Rapids	B	M	167	159
73	Linn	NE	MON	10 AM	Hwy 1 @ Hwy 30		B	P	161	150
74	Linn	NE	TUE	7 AM	Hwy 13 @ Hwy 151		B	P	289	272
75	Linn	NE	SAT	7 AM	Hwy 30 @ Hwy 1		B	P	105	95
76	Linn	NE	MON	12 PM	I-380 Mile Marker 13		B	I	128	120
77	Linn	NE	MON	8 AM	I-380 Mile Marker 25		B	I	90	88
78	Scott	SE	WED	4 PM	F 55 Exit @ Hwy 61		B	P	52	49
79	Scott	SE	THU	4 PM	Hwy 61 @ Hwy 22 Ramp		B	P	77	70
80	Scott	SE	WED	2 PM	I-280 Hwy 61 Exit		B	I	166	162
81	Scott	SE	THU	2 PM	I-80 Exit # 284 (Y40)		B	I	64	63
82	Scott	SE	THU	6 PM	Kimberly @ Harrison	Davenport	B	M	522	500
83	Scott	SE	SUN	10 AM	Locust @ Brady	Davenport	B	M	387	363
84	Scott	SE	SUN	12 PM	Long Grove Exit @ Hwy 61		B	P	198	195
85	Scott	SE	WED	6 PM	Y 48 @ Hwy 61		B	S	176	167
86	Washington	SE	SUN	4 PM	East 7th @ North 4th	Washington	E	M	161	136
87	Washington	SE	THU	6 PM	G6W @ Hwy 92		E	S	38	38
88	Washington	SE	MON	2 PM	Hwy 1 @ Hwy 92		E	P	155	137
89	Washington	SE	MON	4 PM	Hwy 218 Ramp @ Hwy 92		E	P	152	147
90	Louisa	SE	SUN	2 PM	Hwy 92 @ Hwy 61		E	P	135	134
91	Louisa	SE	MON	6 PM	South 4th @ Washington	Wapello	E	M	74	58
92	Louisa	SE	SUN	6 PM	X 43 @ Hwy 92		E	S	32	30
93	Wapello	SE	MON	5 PM	Church @ Richmond	Ottumwa	D	M	371	333
94	Wapello	SE	WED	11 AM	East Jct Hwy 34 & Hwy 63		D	P	348	302
95	Wapello	SE	SAT	8 AM	Hwy 137 @ Hwy 63		D	P	88	84
96	Keokuk	SE	MON	1 PM	Hwy 149 @ Hwy 23		D	P	71	67
97	Wapello	SE	WED	9 AM	Hwy 16 @ Hwy 34		D	P	117	108
98	Wapello	SE	MON	3 PM	T 61 @ Hwy 34		D	S	100	93
99	Wapello	SE	WED	7 AM	V 37 (College St) @ Hwy 34 Agency		D	S	63	54
100	Wapello	SE	SAT	12 PM	Wapello St @ Albia Rd	Ottumwa	E	M	326	297
									12,155	10,942

2008 Seat Belt Usage Survey

Chart 21

July Seat Belt Survey Sites										
No	County	Area	Day	Time	Location	City	Population	System	Observed	Belted
1	Polk	SW	TUE	11 AM	Aurora @ Beaver	Des Moines	A	M	118	108
2	Story	NW	WED	4 PM	6th @ Grand	Ames	D	M	238	228
3	Story	NW	WED	6 PM	Duff Exit @ Hwy 30	Ames	D	P	148	129
4	Story	NW	WED	9 AM	E 23 @ Hwy 69		D	S	45	41
5	Story	NW	SUN	2 PM	E 63 @ Hwy 65		D	S	13	11
6	Polk	SW	WED	1 PM	Grand @ 7th	Des Moines	A	M	178	156
7	Story	NW	WED	5 PM	Hwy 133 @ Hwy 30		D	P	93	89
8	Dallas	SW	FRI	5 PM	Hwy 141 @ Hwy 210		A	P	75	74
9	Polk	SW	WED	3 PM	Hwy 160 @ Hwy 69	Ankeny	A	P	211	199
10	Story	NW	WED	7 AM	Hwy 210 @ Hwy 65		D	P	31	27
11	Story	NW	SUN	6 PM	Hwy 210 @ Hwy 69		D	P	89	83
12	Story	NW	SAT	6 PM	Hwy 65 @ Hwy 30		D	P	144	137
13	Polk	SW	TUE	9 AM	Hwy 945 @ Hwy 931		A	P	24	24
14	Story	NW	WED	2 PM	I-35 Exit # 123		D	I	12	9
15	Polk	SW	WED	4 PM	I-35 Exit # 92		A	I	232	207
16	Polk	SW	FRI	3 PM	I-35 Rest Area		A	I	33	32
17	Story	NW	SUN	4 PM	I-35 Rest Area		D	I	90	75
18	Dallas	SW	SAT	4 PM	I-80 Exit # 110		A	I	266	254
19	Polk	SW	TUE	7 AM	I-80 Exit # 143		A	I	87	77
20	Polk	SW	WED	6 PM	Indianola Ave @ SE 8th	Des Moines	A	M	241	221
21	Story	NW	SAT	2 PM	J Ave. @ 6th	Nevada	D	M	42	41
22	Story	NW	FRI	1 PM	Main @ Clark	Ames	D	M	103	89
23	Polk	SW	WED	11 AM	Meredith @ Merle Hay	Des Moines	A	M	444	395
24	Clarke	SW	SUN	3 PM	E Washington @ Main St	Osceola	E	M	78	70
25	Decatur	SW	TUE	7 AM	Hwy 266 @ Hwy 69	Weldon	E	P	48	43
26	Warren	SW	MON	4 PM	Hwy 28 @ Hwy 92	Martensdale	A	P	77	74
27	Clarke	SW	SUN	1 PM	Hwy 34 @ Hwy 69		E	P	323	298
28	Decatur	SW	SUN	5 PM	I-35 Exit # 12		E	I	63	56
29	Decatur	SW	MON	6 PM	I-35 Exit # 22		E	I	16	16
30	Decatur	SW	TUE	9 AM	J 20 @ Hwy 204	Garden Grove	E	S	13	13
31	Decatur	SW	TUE	11 AM	J 66 @ Hwy 69	Davis City	E	S	12	11
32	Warren	SW	MON	2 PM	R 57 @ Hwy 92		A	S	27	25
33	Decatur	SW	FRI	6 PM	West Jct. Hwy 69 @ Hwy 2	Leon	E	P	97	91
34	Pottawattamie	SW	WED	2 PM	9th Ave. @ S 16th	Council Bluffs	C	M	209	194
35	Pottawattamie	SW	WED	6 PM	A Ave & 25th St	Council Bluffs	C	M	329	293
36	Pottawattamie	SW	SAT	9 AM	Hwy 191 @ Hwy 83		C	P	94	83
37	Pottawattamie	SW	SAT	7 AM	Hwy 6 @ Hwy 191		C	P	176	158
38	Pottawattamie	SW	THU	8 AM	Hwy 6 @ Hwy 59		C	P	83	74
39	Pottawattamie	SW	THU	10 AM	Hwy 83 @ Hwy 59		C	P	86	78
40	Pottawattamie	SW	SUN	10 AM	Hwy 92 @ Hwy 59		C	P	111	96
41	Pottawattamie	SW	SUN	8 AM	I-29 Exit # 47		C	I	112	98
42	Pottawattamie	SW	THU	12 PM	I-80 Exit # 40		C	I	135	115
43	Pottawattamie	SW	SUN	12 PM	I-80 Rest Area		C	I	162	152
44	Pottawattamie	SW	SAT	11 AM	L 55 @ Hwy 6		C	S	47	44
45	Pottawattamie	SW	WED	4 PM	M 16 @ Hwy 92		C	S	48	46
46	Buena Vista	NW	MON	5 PM	C 49 @ Hwy 71		E	S	89	87
47	Buena Vista	NW	MON	3 PM	Hwy 110 @ Hwy 7		E	P	93	88
48	Buena Vista	NW	THU	11 AM	Hwy 7 @ Hwy 71		E	P	93	91
49	Buena Vista	NW	MON	2 PM	Hwy 7 @ Hwy 71		E	P	135	133
50	Buena Vista	NW	THU	7 AM	Lake @ Third	Storm Lake	E	M	243	234
51	Clay	NW	THU	11 AM	4th @ Grand	Spencer	E	M	290	276
52	Clay	NW	SAT	5 PM	B 53 @ Hwy 71		E	S	6	6
53	Clay	NW	SAT	6 PM	Grand @ 18th	Spencer	E	M	502	478
54	Clay	NW	SAT	1 PM	Hwy 10 @ Hwy 71		E	P	36	34
55	Clay	NW	SAT	2 PM	Hwy 18 @ Hwy 71		E	P	115	112
56	Clay	NW	SAT	3 PM	B 40 @ Hwy 71		E	P	26	24
57	Clay	NW	SAT	4 PM	N 14 @ Hwy 18		E	S	147	144
58	Franklin	NE	SUN	4 PM	1st @ 1st Ave	Hampton	E	M	177	135
59	Franklin	NE	WED	8 AM	C 25 @ Hwy 65		E	S	10	6
60	Butler	NE	WED	10 AM	C 55 @ Hwy 14		E	S	7	4
61	Franklin	NE	SUN	2 PM	S 14 @ Hwy 3		E	P	26	24
62	Butler	NE	SUN	7 AM	Hwy 14 @ Hwy 20		E	P	34	26
63	Butler	NE	SUN	9 AM	Hwy 14 @ Hwy 3		E	P	60	54
64	Butler	NE	SUN	11 AM	Hwy 188 @ Hwy 3		E	P	53	42
65	Franklin	NE	SAT	7 AM	Hwy 65 @ Hwy 3		E	P	111	77
66	Franklin	NE	SUN	6 PM	I-35 Exit # 165		E	I	48	43
67	Franklin	NE	SAT	11 AM	I-35 Exit # 170		E	I	6	6
68	Butler	NE	SAT	9 AM	Main @ Railroad	Allison	E	M	43	25
69	Linn	NE	SUN	4 PM	8th Ave @ 2nd	Cedar Rapids	B	M	278	264
70	Linn	NE	TUE	2 PM	E 34 @ Hwy 13		B	S	123	119
71	Linn	NE	SAT	5 PM	E 70 @ Hwy 151		B	S	47	46
72	Linn	NE	SUN	6 PM	First Ave @ 29th	Cedar Rapids	B	M	193	179
73	Linn	NE	ST	3 PM	Hwy 1 @ Hwy 30		B	P	193	187
74	Linn	NE	SUN	2 PM	Hwy 13 @ Hwy 151		B	P	331	310
75	Linn	NE	TUE	6 PM	Hwy 30 @ Hwy 1		B	P	123	118
76	Linn	NE	TUE	4 PM	I-380 Mile Marker 13		B	I	160	157
77	Linn	NE	SAT	1 PM	I-380 Mile Marker 25		B	I	123	121
78	Scott	SE	THU	1 PM	F 55 Exit @ Hwy 61		B	P	54	53
79	Scott	SE	TUE	7 AM	Hwy 61 @ Hwy 22 Ramp		B	P	46	41
80	Scott	SE	THU	3 PM	I-280 Hwy 61 Exit		B	I	207	202
81	Scott	SE	TUE	11 AM	I-80 Exit # 284 (Y40)		B	I	96	91
82	Scott	SE	TUE	9 AM	Kimberly @ Harrison	Davenport	B	M	386	368
83	Scott	SE	THU	5 PM	Locust @ Brady	Davenport	B	M	400	376
84	Scott	SE	THU	5 PM	Long Grove Exit @ Hwy 61		B	P	254	248
85	Scott	SE	THU	3 PM	Y 48 @ Hwy 61		B	S	123	118
86	Washington	SE	SUN	3 PM	East 7th @ North 4th	Washington	E	M	59	55
87	Washington	SE	SUN	5 PM	G6W @ Hwy 92		E	S	31	30
88	Washington	SE	FRI	3 PM	Hwy 1 @ Hwy 92		E	P	160	152
89	Washington	SE	MON	12 PM	Hwy 218 Ramp @ Hwy 92		E	P	123	119
90	Louisa	SE	FRI	5 PM	Hwy 92 @ Hwy 61		E	P	154	142
91	Louisa	SE	SUN	1 PM	South 4th @ Washington	Wapello	E	M	34	26
92	Louisa	SE	FRI	1 PM	X 43 @ Hwy 92		E	S	22	20
93	Wapello	SE	SUN	11 AM	Church @ Richmond	Ottumwa	D	M	224	186
94	Wapello	SE	SUN	9 AM	East Jct. Hwy 34 @ Hwy 63		D	P	366	347
95	Wapello	SE	FRI	4 PM	Hwy 137 @ Hwy 63		D	P	140	138
96	Keokuk	SE	FRI	2 PM	Hwy 149 @ Hwy 23		D	P	97	95
97	Wapello	SE	SAT	3 PM	Hwy 16 @ Hwy 34		D	P	97	93
98	Wapello	SE	SUN	7 AM	T 61 @ Hwy 34		D	S	39	35
99	Wapello	SE	SAT	5 PM	V 37 (College St) @ Hwy 34 Agency		D	S	66	60
100	Wapello	SE	SAT	1 PM	Wapello St @ Albia Rd	Ottumwa	E	M	210	186
									12,612	11,665