

STANDARD TIME ZONES OF THE WORLD

# Park & Ride

## Update Brief

### Joint MPO/RPA Quarterly Meeting

Tuesday, 05 December 2017



SMARTER | SIMPLER | CUSTOMER DRIVEN  
2017/11/17 | 2017/11/17 | 2017/11/17

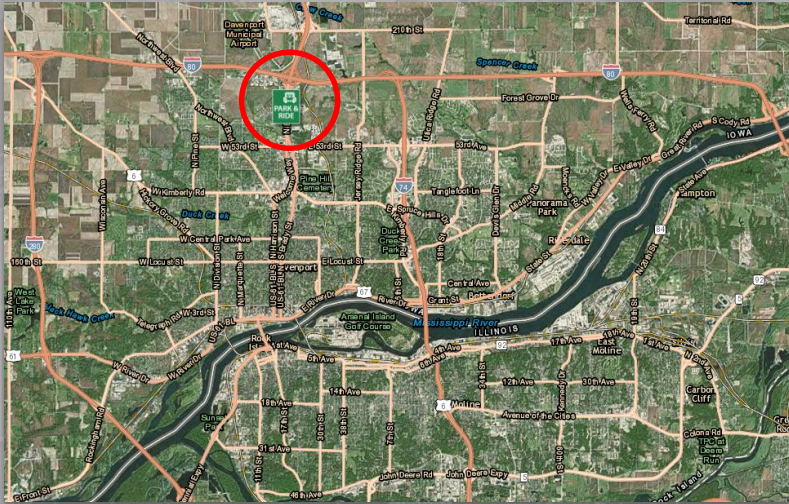
Contact Us:

P. 515.239.1772 / [joseph.drahos@iowadot.us](mailto:joseph.drahos@iowadot.us)



# New – Davenport

<http://iowadot.maps.arcgis.com/>

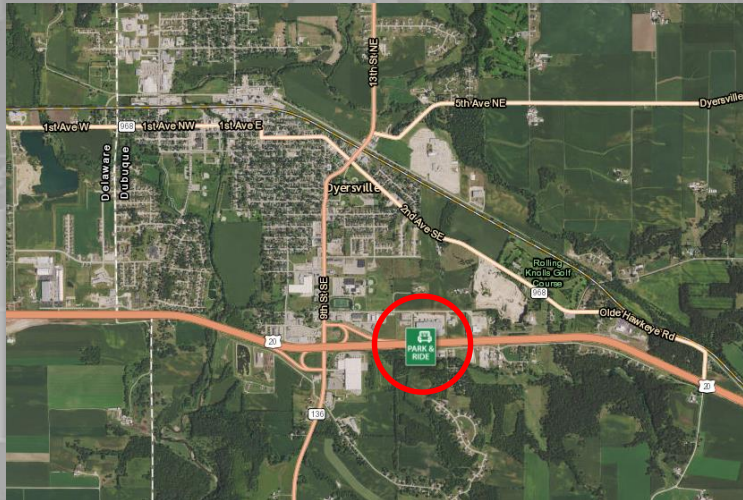






# New - Dyersville

<http://iowadot.maps.arcgis.com/>

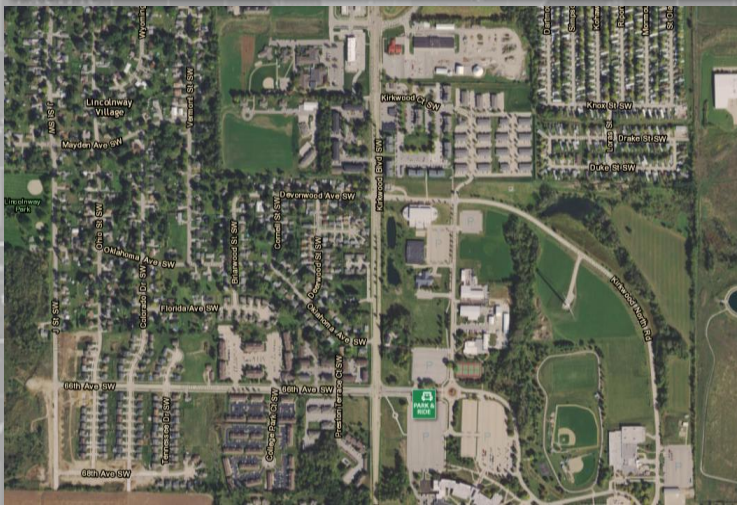
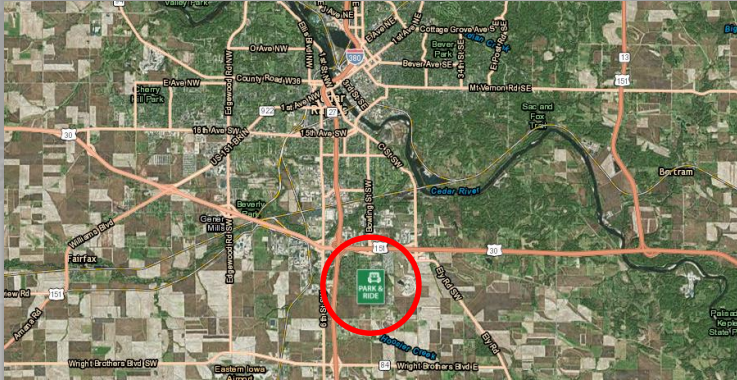






# New – Cedar Rapids

<http://iowadot.maps.arcgis.com/>





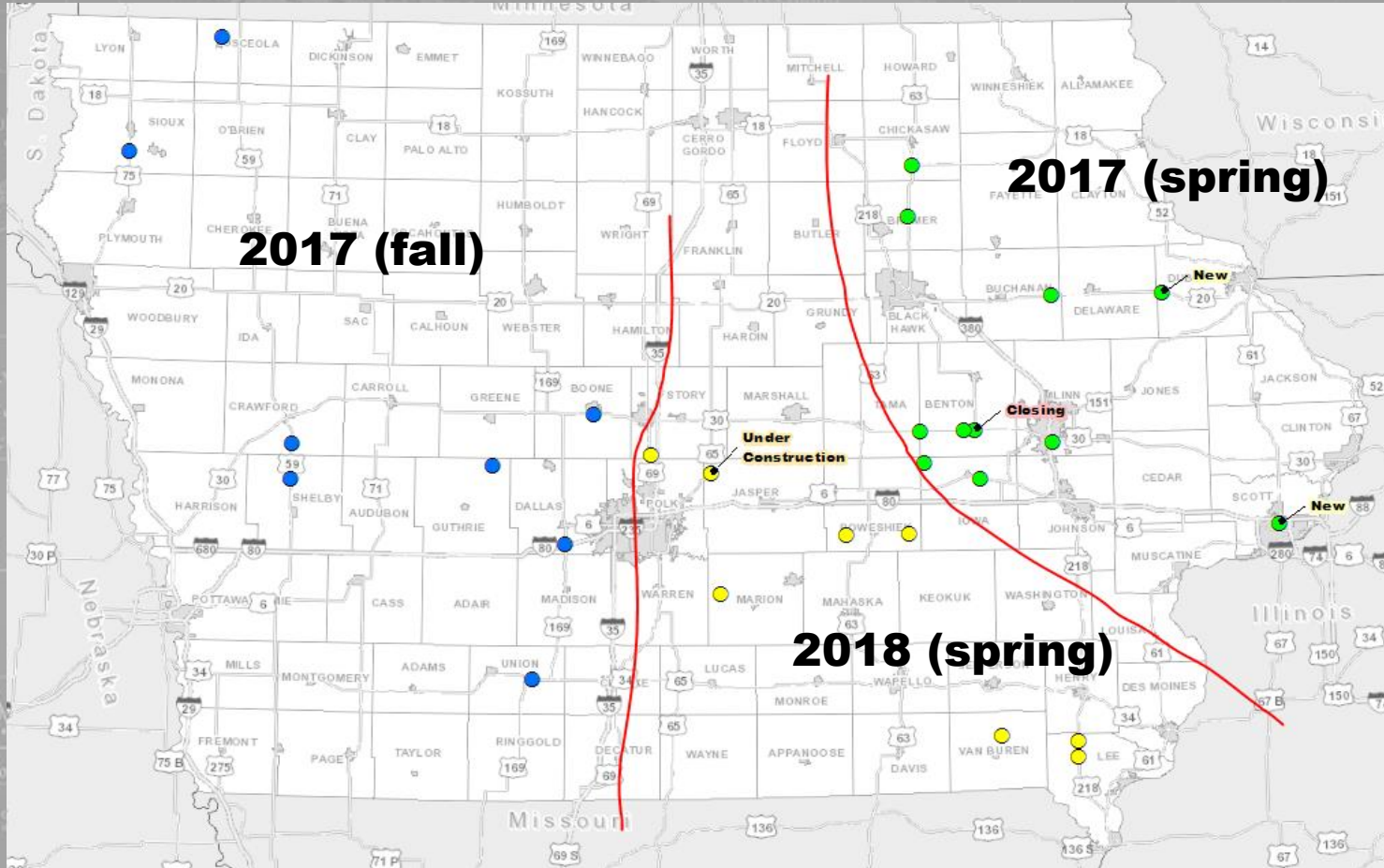
# Miovision







# Miovision



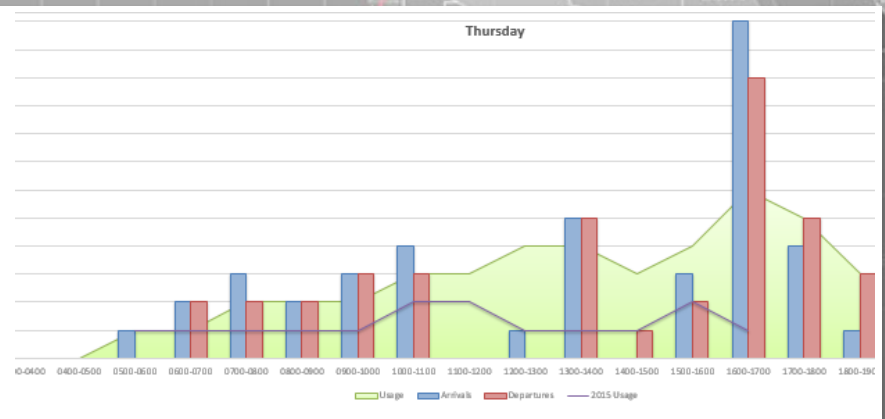
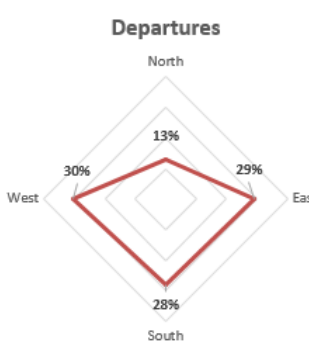
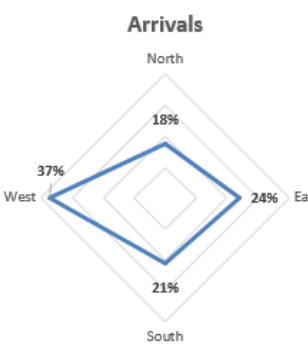


# Miovision



W:\Planning\TransData\SystemMonitoring\TrafficMoni						Video	001	002	003	004	005
PRID	LOCATION	DATE	DAY	DIRECTION_FROM	DIRECTION_TO	0000-0100	0100-0200	0200-0300	0300-0400	0400-0500	
8601	U.S. 30 and IA 21	2/28/2017	Tuesday	North	North	0	0	0	0	0	
8601	U.S. 30 and IA 21	2/28/2017	Tuesday	East	East	0	0	0	0	0	
8601	U.S. 30 and IA 21	2/28/2017	Tuesday	South	South	0	0	0	0	1	
8601	U.S. 30 and IA 21	2/28/2017	Tuesday	West	West	0	0	0	0	1	
Arrivals						0	0	0	0	2	
DEPARTURES											
8601	U.S. 30 and IA 21	2/28/2017	Tuesday	North	North	0	0	0	0	0	
8601	U.S. 30 and IA 21	2/28/2017	Tuesday	East	East	0	0	0	0	1	
8601	U.S. 30 and IA 21	2/28/2017	Tuesday	South	South	0	0	0	0	0	
8601	U.S. 30 and IA 21	2/28/2017	Tuesday	West	West	0	0	0	0	0	
Departures						0	0	0	0	1	
Usage						1	1	1	1	2	
Notes						1 car already here (later towed)					

W:\Planning\TransData\SystemMonitoring\TrafficMoni						Video	025	026	027	028	029
PRID	LOCATION	DATE	DAY	DIRECTION_FROM	DIRECTION_TO	0000-0100	0100-0200	0200-0300	0300-0400	0400-0500	
8601	U.S. 30 and IA 21	3/1/2017	Wednesday	North	North	0	0	0	0	0	
8601	U.S. 30 and IA 21	3/1/2017	Wednesday	East	East	0	0	0	0	0	
8601	U.S. 30 and IA 21	3/1/2017	Wednesday	South	South	0	0	0	0	1	
8601	U.S. 30 and IA 21	3/1/2017	Wednesday	West	West	0	0	0	0	1	
Arrivals						0	0	0	0	2	
DEPARTURES											
8601	U.S. 30 and IA 21	3/1/2017	Wednesday	North	North	0	0	0	0	0	
8601	U.S. 30 and IA 21	3/1/2017	Wednesday	East	East	0	0	0	0	1	
8601	U.S. 30 and IA 21	3/1/2017	Wednesday	South	South	0	0	0	0	0	
8601	U.S. 30 and IA 21	3/1/2017	Wednesday	West	West	0	0	0	0	0	



# THANK YOU

FOR YOUR ATTENTION



SMARTER | SIMPLER | CUSTOMER DRIVEN  
2011W1E1 | 21W1E1 | C0210W1E1 DRIVEN

Contact Us:

P. 515.239.1772 / [joseph.drahos@iowadot.us](mailto:joseph.drahos@iowadot.us)