

**DEPARTMENT OF TRANSPORTATION  
COMMISSION ORDER**

Division/Bureau/Office Transportation Development Division  
Systems Planning Bureau Order No. \_\_\_\_\_  
 Submitted by Debra Arp Phone No. 515-239-1681 Meeting Date April 9, 2024  
 Title Statewide Transportation Alternatives Set-aside Program Funding Recommendations

**DISCUSSION/BACKGROUND:**

Review of the current round of applications for funding from the Statewide Transportation Alternatives Set-aside Program has been completed. The following funding recommendations will be presented.

Safe Routes to School Projects

Iowa Safe Routes Partnership (Iowa Northland Regional Council of Governments)	\$ 258,108
Safe Routes to School & Recreational Trails Phase I (Logan)	\$ 652,212
3rd Street Sidewalk Extension Project (Anamosa)	\$ 650,000
Washington Avenue Safe Routes to School (Grinnell)	\$ 581,891

All Other Projects

Bentonsport Pedestrian Bridge Rehabilitation (Van Buren County Conservation Board)	\$1,612,000
Clear Creek Trail (Johnson County Conservation Board)	\$1,800,000
Grant Street South Realignment (Bondurant)	\$ 500,000
Hickman Interchange Bicycle/Pedestrian Facilities (Clive)	\$ 800,000
Iowa River's Edge Trail Surfacing and South Fork Bridge Replacement (Hardin County Conservation Board)	\$2,000,000
Mississippi River Trail Eagle Ridge Road to May Street (LeClaire)	\$1,014,833

Total \$9,869,044

**PROPOSAL/ACTION RECOMMENDATION:**

It is recommended the Commission approve the Statewide Transportation Alternatives Set-aside Program funding recommendations as listed.

**COMMISSION ACTION:**

Moved by \_\_\_\_\_ Seconded by \_\_\_\_\_

	Aye	Vote Nay	Pass
Arnold	_____	_____	_____
Fehrman	_____	_____	_____
Gaesser	_____	_____	_____
Juckette	_____	_____	_____
Rielly	_____	_____	_____
Stutsman	_____	_____	_____
Yanney	_____	_____	_____

\_\_\_\_\_  
 Division Director                      Legal                      State Director



# Statewide Transportation Alternatives Set-aside Program Funding Recommendation

March 12, 2024



# Statewide Transportation Alternatives Set-aside Program

- **Current version of former Transportation Enhancement program that has existed since 1991**
- **Majority of funding is distributed to Iowa's MPOs and RPAs, but \$5 million reserved for statewide projects annually with 20% target for Safe Routes to School projects**
- **Eligible activities may include:**
  - On-road and off-road non-motorized trail facilities, safe routes for non-drivers, conversion of abandoned rail corridors for trails, preservation/rehabilitation of historic transportation facilities among others
  - Federal Recreational Trails Program eligible activities
  - Infrastructure-related or non-infrastructure related Safe Routes to School Projects
  - Scenic Byways

## **Project Evaluation Criteria**

- **Statewide or multi-regional impact of the project (25 points)**
- **Connectivity and Completion of Trail Linkages (15 points)**
- **Alignment with Local, Regional, or Statewide Planning Documents (15 points)**
- **Federal-aid Highway Project Development Process, Understanding and Capacity (10 points)**
- **Contribution Toward Safety for All Transportation Modes (10 points)**
- **Enhancement of Statewide Tourism Benefits (10 points)**

## **Project Evaluation Criteria (continued)**

- **Leverage of other funding sources(10 points)**
- **Need for the proposed project (10 points)**
- **Addresses high-need areas (10 points)**
- **Improve accessibility (5 points)**
- **Long-term maintenance plan (5 points)**
- **Project readiness (5 points)**



# Available Funding and Application Summary

## Available Funding

- Safe Routes to School (SRTS) Funding Target: \$2,000,000
- All Other Projects Funding Target: \$8,000,000
- Total Funding Available: \$10,000,000

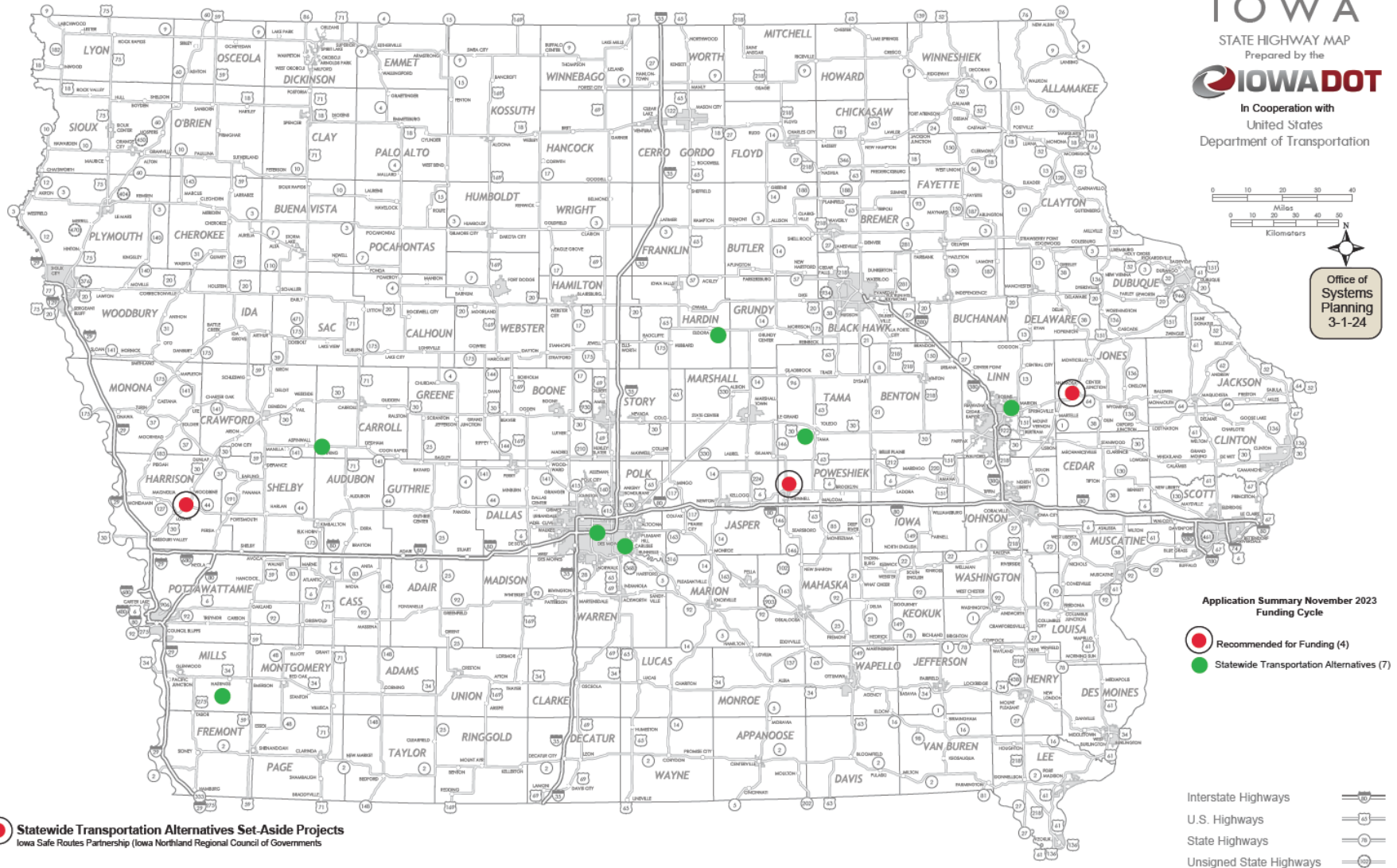
## Application Summary

- Total number of projects: 28
- Total project costs: \$50,078,218
- Total amount requested: \$20,962,374

# Safe Routes to School Applications Recommended

PROJECT NAME	SPONSOR	SCORE	TOTAL PROJECT COST	REQUESTED AMOUNT (% of Total Project Cost)	RECOMMENDED AMOUNT (% of Total Project Cost)
<a href="#"><u>Iowa Safe Routes Partnership</u></a>	Iowa Northland Regional Council of Governments	97	\$322,635	\$258,108 (80%)	\$258,108 (80%)
<a href="#"><u>Safe Routes to School &amp; Recreational Trails Phase 1</u></a>	Logan	80	\$1,193,761	\$652,212 (55%)	\$652,212 (55%)
<a href="#"><u>3rd Street Sidewalk Extension Project</u></a>	Anamosa	73	\$1,208,300	\$650,000 (54%)	\$650,000 (54%)
<a href="#"><u>Washington Avenue Safe Routes to School</u></a>	Grinnell	72	\$727,364	\$581,891 (80%)	\$581,891 (80%)

# Safe Routes to School Applications Received



Statewide Transportation Alternatives Set-Aside Projects  
Iowa Safe Routes Partnership (Iowa Northland Regional Council of Governments)



# All Other Applications Recommended

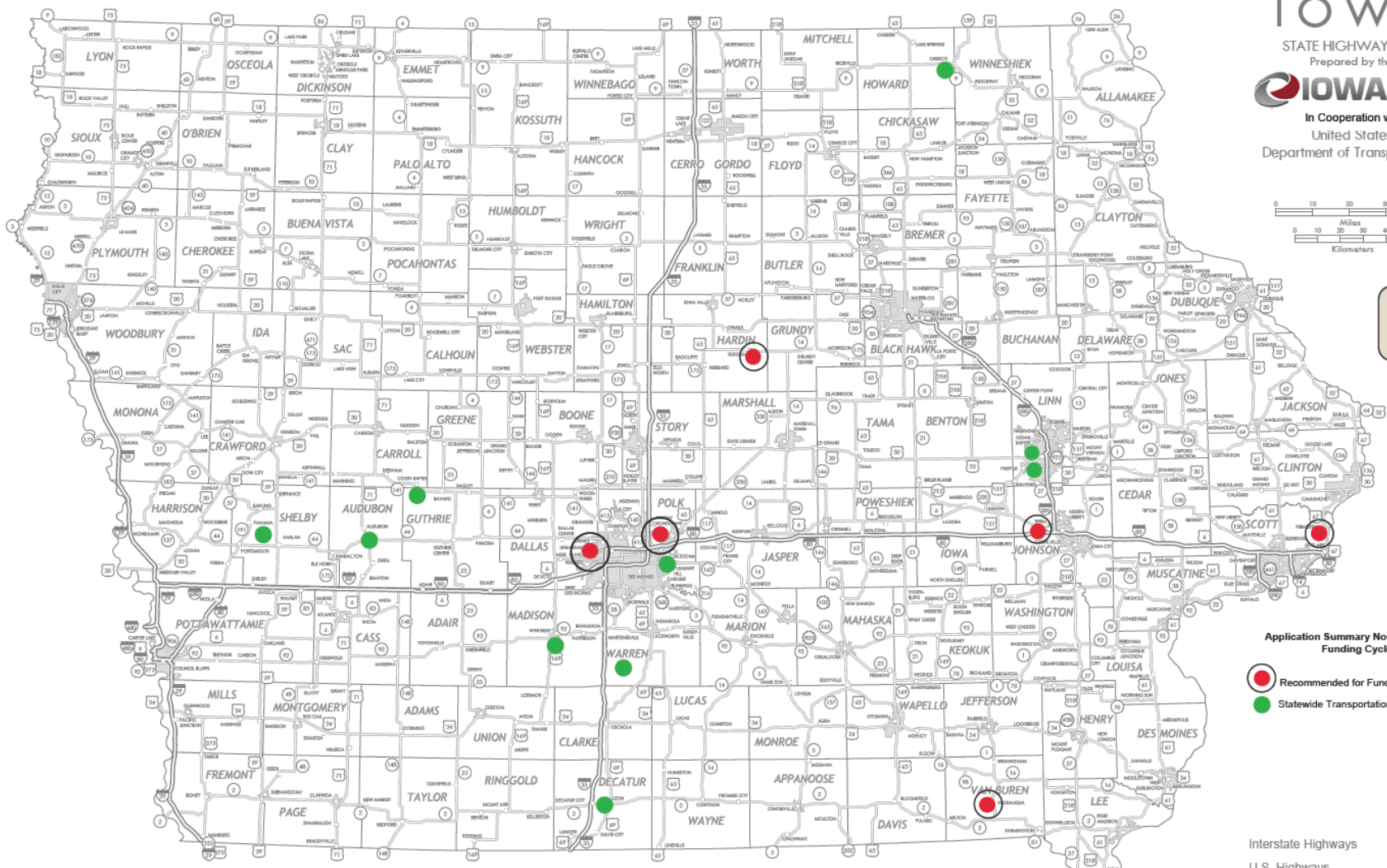
PROJECT NAME	SPONSOR	SCORE	TOTAL PROJECT COST	REQUESTED AMOUNT (% of Total Project Cost)	RECOMMENDED AMOUNT (% of Total Project Cost)
<a href="#"><u>Iowa River's Edge Trail Surfacing and South Fork Bridge Replacement</u></a>	Hardin County Conservation Board	118	\$3,990,000	\$2,000,000 (50%)	\$2,000,000 (50%)
<a href="#"><u>Clear Creek Trail</u></a>	Johnson County Conservation Board	109	\$3,714,481	\$1,800,000 (48%)	\$1,800,000 (48%)
<a href="#"><u>Grant Street South Realignment</u></a>	Bondurant	102	\$3,251,000	\$500,000 (15%)	\$500,000 (15%)
<a href="#"><u>Hickman Interchange Bicycle/Pedestrian Facilities</u></a>	Clive	98	\$6,830,000	\$800,000 (12%)	\$800,000 (12%)
<a href="#"><u>Bentonsport Pedestrian Bridge Rehabilitation</u></a>	Van Buren County Conservation	96	\$2,039,500	\$1,612,000 (79%)	\$1,612,000 (79%)
<a href="#"><u>Mississippi River Trail Eagle Ridge Road to May Street</u></a>	LeClaire	95	\$1,268,542	\$1,014,833 (80%)	\$1,014,833 (80%)

# All Other Applications Received

IOWA  
STATE HIGHWAY MAP  
Prepared by the  
**IOWA DOT**  
In Cooperation with  
United States  
Department of Transportation



Office of Systems Planning 3-1-24



Application Summary November 2023 Funding Cycle

- Recommended for Funding (6)
- Statewide Transportation Alternatives (11)

● Native Grass and Wildflower Seed (University of Northern Iowa)

Interstate Highways

U.S. Highways

State Highways

Unsigned State Highways



QUESTIONS?



Susan Hollenkamp, Systems Planning Bureau  
[Susan.Hollenkamp@lowadot.us](mailto:Susan.Hollenkamp@lowadot.us)  
515-239-1810

## Iowa Safe Routes Partnership (Iowa Northland Regional Council of Governments)

A comprehensive program that provides support to communities by implementing SRTS initiatives, including pedestrian and bicycle safety education through encouragement activities both inside and outside the classroom. The project is a collaboration among INRCOG, Upper Explorerland Regional Planning Commission (UERPC), and the Iowa Bicycle Coalition.

**Total Cost:** \$322,635  
**Requested:** \$258,108 (80%)





## Safe Routes to School & Recreational Trails Phase 1 (Logan)

This project will construct a 0.81-mile trail and improvements to an at-grade crosswalk at Iowa 127 to improve connectivity between west and east sides of town and address a significant community concern of connectivity to Logan-Magnolia Community School District (Lo-Ma CSD), a Pre-K-12 school located on the north side of town. The project is the first phase of an over 5-mile planned trail in Logan.

**Total Cost: \$1,193,761**  
**Requested: \$652,212 (55%)**

[Return to List of Applications Recommended](#)



### 3rd Street Sidewalk Extension Project (Anamosa)

The 3rd Street Sidewalk Extension Project in Anamosa will connect students in east Anamosa with the schools located in west Anamosa across U.S. 151 by constructing sidewalk and trail segments approximately 1-mile in length and a pedestrian crossing of Iowa 64.

Total Cost: \$1,208,300  
Requested: \$650,000 (54%)

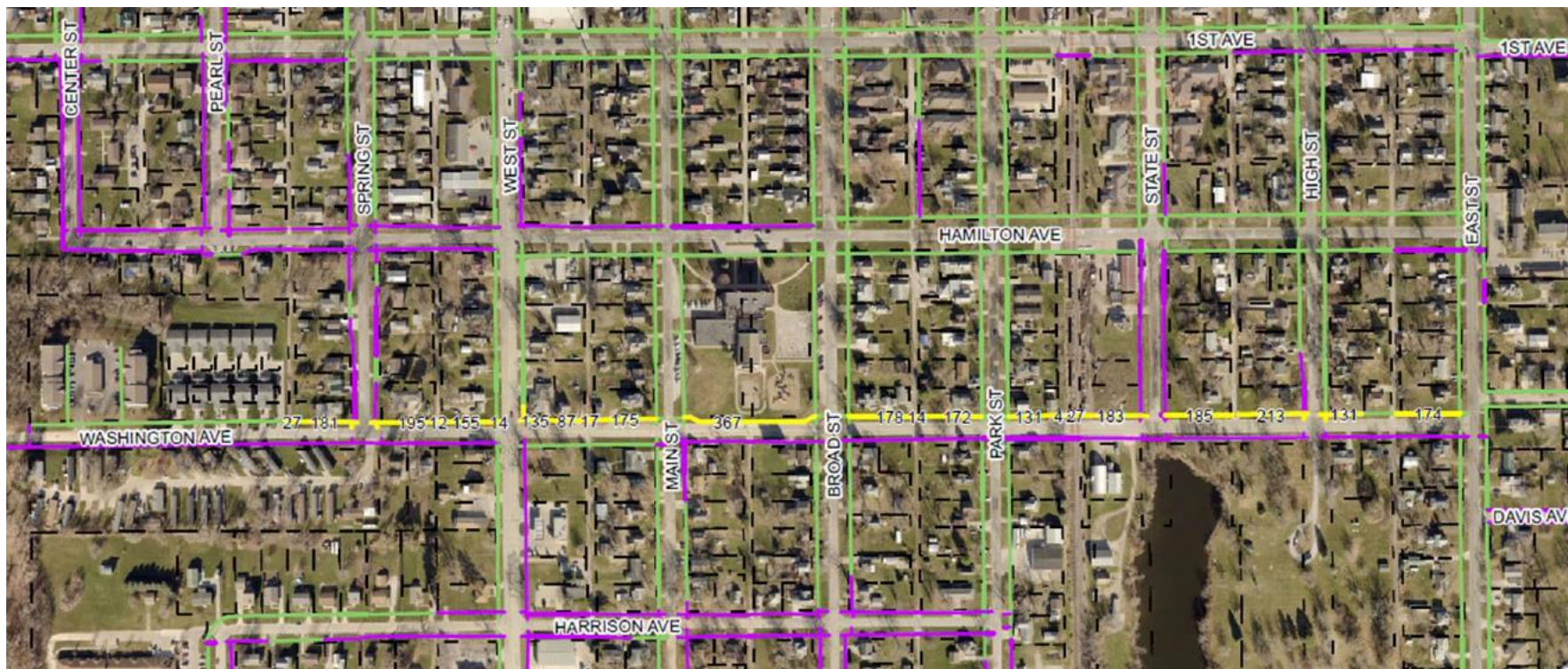


## Washington Avenue Safe Routes to School (Grinnell)

This Project will add 0.6-mile of sidewalk on Washington Avenue allowing students to walk or bike to Davis Elementary school safely from both the east and west sides of Grinnell.

**Total Cost: \$727,364**

**Requested: \$581,891 (80%)**

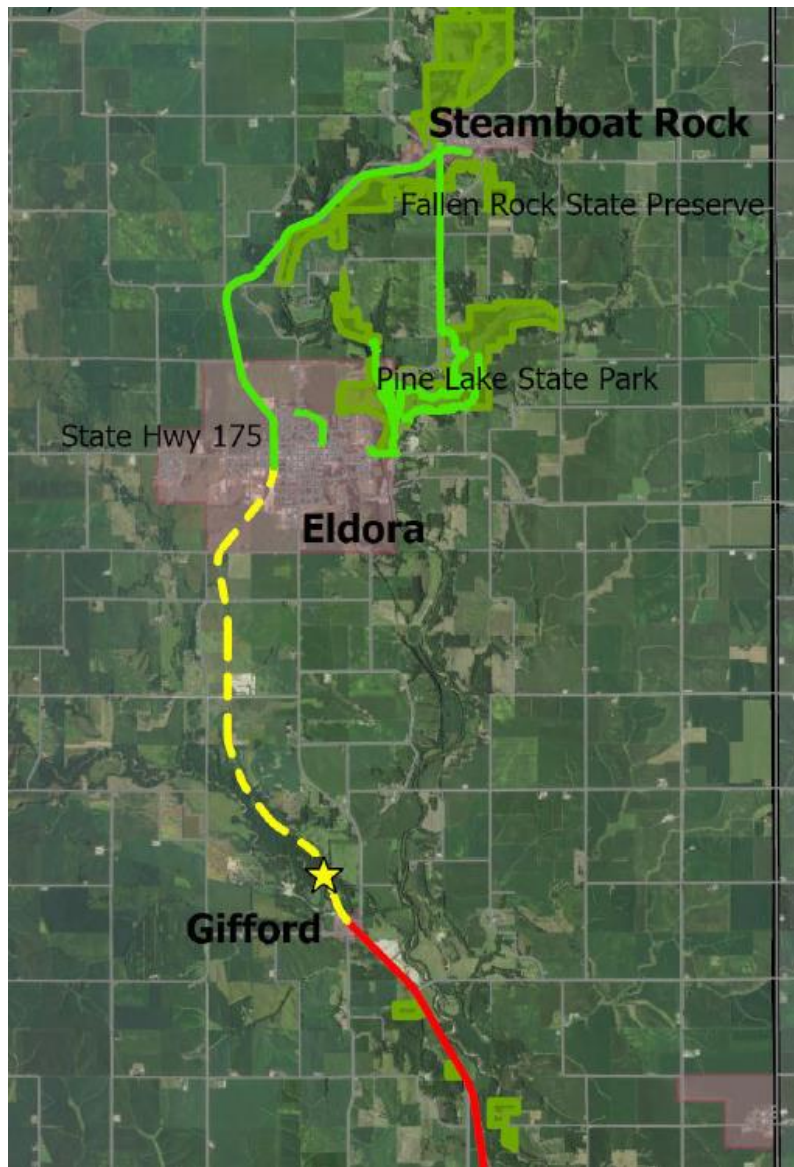


## Iowa River's Edge Trail Surfacing and South Fork Bridge Replacement (Hardin County Conservation Board)

This project phase will extend paving of the Iowa River's Edge Trail 5.5 miles from Iowa 175 in Eldora, crossing 5 rehabilitated rail bridges, to 285th Street in Gifford. It will also rehabilitate a 235 linear foot bridge over the South Fork of the Iowa River. The Iowa River's Edge Trail is a planned 34-mile trail connecting Steamboat Rock in Hardin County and Marshalltown in Marshall County.

**Total Cost: \$3,990,000**

**Requested: \$2,000,000 (50%)**





## Clear Creek Trail to F.W. Kent Park (Johnson County Conservation Board)

This project includes trail construction along two segments of the Clear Creek Trail that will contribute to connecting Iowa City to F.W. Kent Park and eventually the Amana Colonies. Grading, excavation, retaining wall construction and subbase installation along Half Moon Avenue as well as an underpass of U.S. 6 near F. W. Kent Park will be completed.

**Total Cost: \$3,714,481**  
**Requested: \$1,800,000 (48%)**



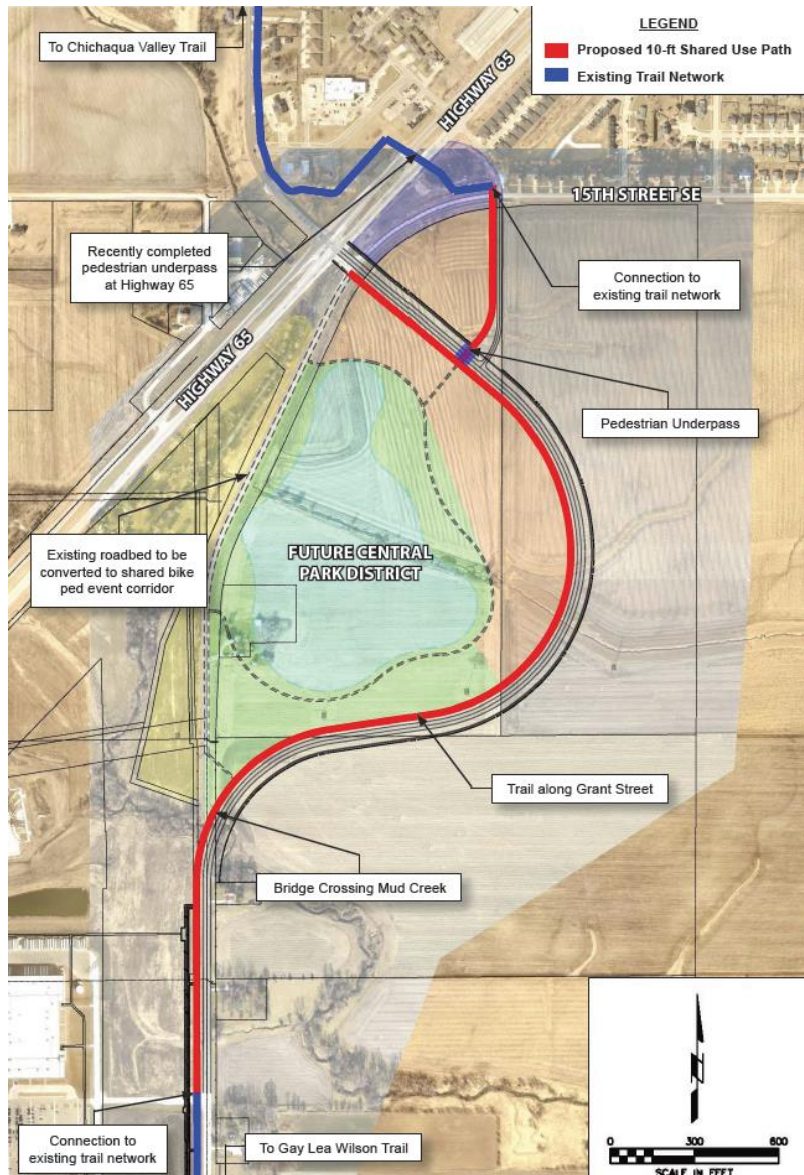


## Grant Street South Realignment (Bondurant)

This project will construct a 6,200-foot trail parallel to realigned Grant Street South between U.S. 65 to the north and 32nd Street to the South as well as a pedestrian underpass connecting 15<sup>th</sup> Street South with realigned Grant Street South. The project contributes to a future connection between the Chichaqua Valley Trail and Gay Lea Wilson Trail.

**Total Cost: \$3,251,000**

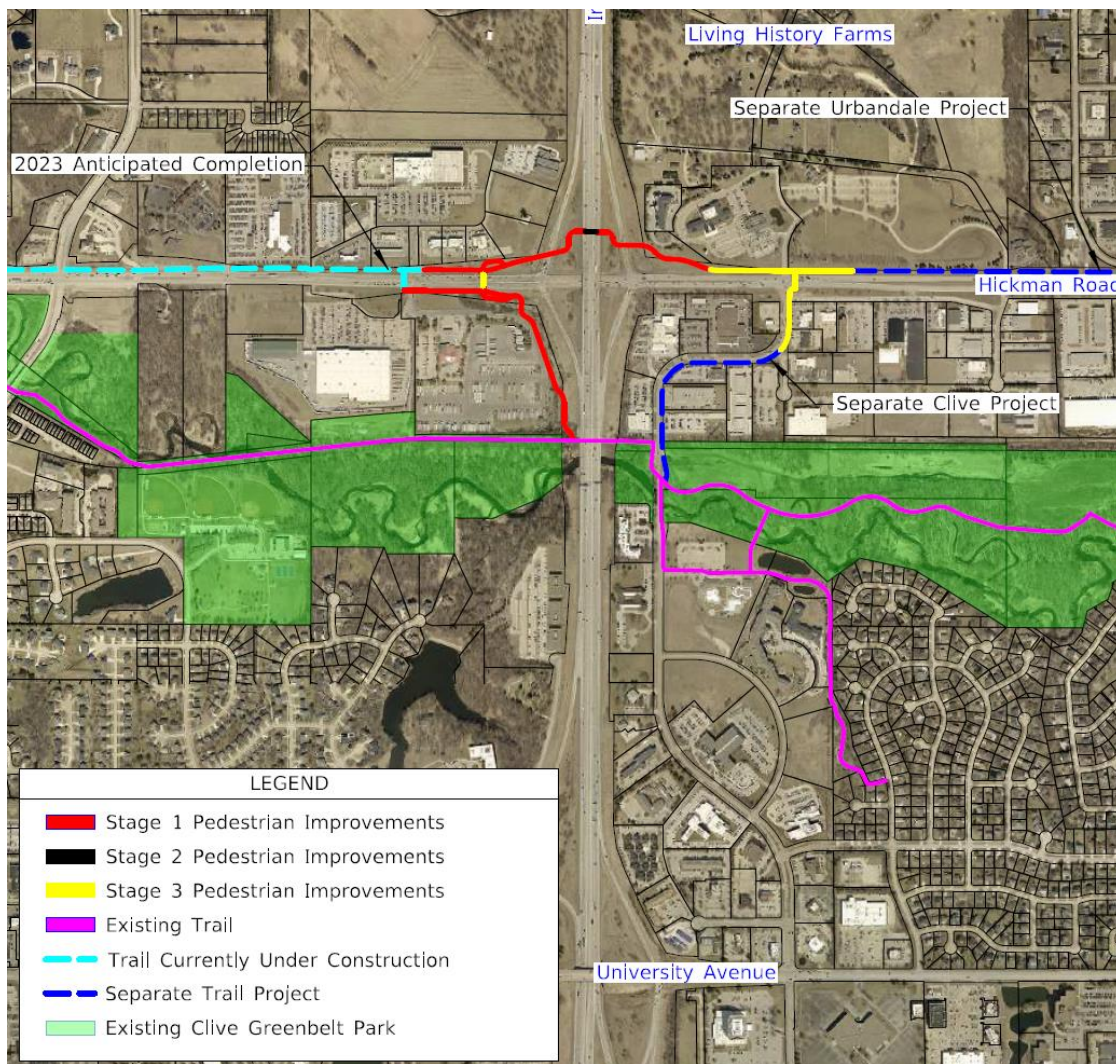
**Requested: \$500,000 (15%)**



## Hickman Interchange Bicycle/Pedestrian Facilities (Clive)

This project will construct bicycle and pedestrian facilities as part of the Interstate 35/80 and Hickman Road interchange reconstruction project. The project includes construction of a regional trail connection between the Racoon River Valley Trail and the Clive Greenbelt Park and trail system.

**Total Cost: \$6,830,000**  
**Requested: \$800,000 (12%)**



## Bentonsport Pedestrian Bridge Rehabilitation (Van Buren County Conservation Board)

This project will repair and retrofit damaged iron members, tuckpoint stone supports, remove remnants of the old wood and asphalt roadbed, and replace the aging wood pedestrian walkway on the 1882 five-span Des Moines River truss bridge in the Bentonsport National Historic District.

**Total Cost: \$2,039,500**

**Requested: \$1,612,000 (79%)**

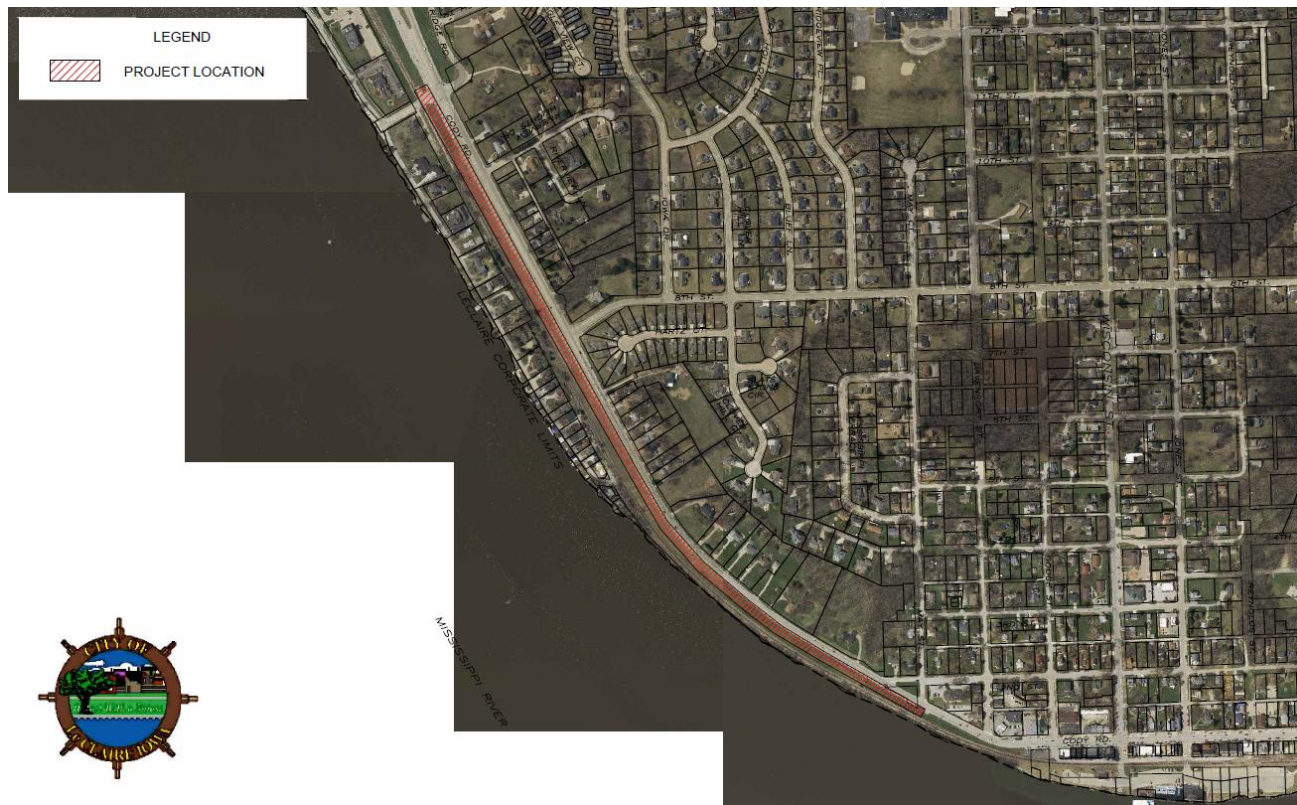


## Mississippi River Trail Eagle Ridge Road to May Street (LeClaire)

This project will construct a 4,500-foot trail along U.S. 67 in LeClaire as part of the Mississippi River Trail connecting commercial districts from Eagle Ridge Road to May Street.

**Total Cost: \$1,268,542**

**Requested: \$1,014,833 (80%)**



## Safe Routes to School

### Applications Not Recommended for Award

PROJECT NAME	SPONSOR	SCORE	TOTAL PROJECT COST	REQUESTED AMOUNT (% of Total Project Cost)	RECOMMENDED AMOUNT (% of Total Project Cost)
Independence Trail	Manning	67	\$636,000	\$508,800 (80%)	\$0
Des Moines Metropolitan Safe Routes to School Project	Iowa Bicycle Coalition	64	\$226,786	\$181,429 (80%)	\$0
Eldora Safe Routes to School	Eldora	62	\$311,000	\$248,000 (50%)	\$0
Pedestrian Hybrid Beacon at W.16th Street and U.S. 63	Tama	54	\$210,000	\$168,000 (80%)	\$0
Malvern Safe Route to School Wolverine Trail	Malvern	50	\$529,183	\$303,680 (57%)	\$0
Marion Schools Sidewalk Gap Infill	Marion	45	\$562,520	\$402,000 (71%)	\$0
Carlisle Safe Routes to School	Carlisle	30	\$805,305	\$644,244 (80%)	\$0

# All Other Applications Not Recommended for Award

PROJECT NAME	SPONSOR	SCORE	TOTAL PROJECT COST	REQUESTED AMOUNT (% of Total Project Cost)	RECOMMENDED AMOUNT (% of Total Project Cost)
Great Western Trail Rehabilitation Phase 2	Warren County Conservation Board	87	\$2,154,000	\$1,200,000 (56%)	\$0
Wapsi Great Western Line Trail Renovation Elma to Acme	Howard County Conservation Board	85	\$2,447,411	\$1,957,928 (80%)	\$0
Native Grass and Wildflower Seed	University of Northern Iowa	79	\$400,676	\$320,541 (80%)	\$0
Little River Scenic Pathway Extension Phase 2	Decatur County Conservation Board	71	\$555,000	\$184,000 (33%)	\$0
Ballpark to Ballpark Trail Phase 2	Shelby County	68	\$903,975	\$124,885 (14%)	\$0
T-Bone Trail Resurfacing Audubon to Hamlin	Audubon County Conservation Board	64	\$1,170,000	\$936,000 (80%)	\$0

# All Other Applications Not Recommended for Award

PROJECT NAME	SPONSOR	SCORE	TOTAL PROJECT COST	REQUESTED AMOUNT (% of Total Project Cost)	RECOMMENDED AMOUNT (% of Total Project Cost)
Adventureland Drive NW Reconstruction 17th Ave NW to 9th Ave NW Bicycle/Pedestrian Improvements	Altoona	64	\$9,807,500	\$540,800 (6%)	\$0
Morgan Creek Trail Phase 4	Linn County Conservation Board	63	\$1,910,000	\$1,280,000 (67%)	\$0
Morgan Creek Trail Cedar River Bridge	Linn County Conservation Board	63	\$500,000	\$400,000 (80%)	\$0
Riverside Trail Rehabilitation	Coon Rapids	59	\$1,174,000	\$804,800 (69%)	\$0
Holliwell Covered Bridge Rehabilitation	Madison County	58	\$1,229,280	\$887,424 (72%)	\$0